

# END-SUCTION CENTRIFUGAL PUMPS

Series: IA

2 - 125 HP / 1750 & 3500 RPM

Suction: 1½" - 8" NPT or flange

Discharge: 1" - 6" NPT or flange



Representative images

## APPLICATIONS

- ▶ Booster systems
- ▶ Water transfer
- ▶ Chilled water system
- ▶ High flow-rate / medium pressure

## VOLUTE

Cast iron ASTM A-48 class 30

## LIQUID TEMPERATURE

160°F (71°C) max.

## INTERMEDIATE COUPLING

Cast iron ASTM A-48 class 30

## IMPELLER

- ▶ Cast iron ASTM A-48 class 30
- ▶ Dynamically balanced

## SEAL

**Design:** mechanical, type 01.

**Material:** Ceramic stationary part, carbon ring seal and exclusion in the rotating part. Buna-N elastomer and stainless steel spring.

## SHAFT SLEEVE

Stainless steel

## O-RINGS

Buna-N

## MOTOR

High quality premium efficiency TEFC electric motors, designed & developed in accordance with industry standards for industrial and commercial pumping applications.

- ▶ 1 & 3 phases, 60 Hz
- ▶ Rated output: 2 to 125 HP
- ▶ 1750 & 3500 RPM
- ▶ Frame sizes: 182 JM to 405 JM

## HARDWARE

Carbon steel

## PAINT

Air dry enamel, water based.

Last update: MAR/11/2024

## End Suction Centrifugal Close Coupled Pumps

Model	Size	HP	Phase
IA1	1½" x 1" x 7"	2 to 7.5	1 & 3
IA1½	2" x 1½" x 9"	5 to 20	1 & 3
IA1½H	2" x 1½" x 9"	3 to 30	3
IA1½XH	2" x 1½" x 9"	3 to 30	3
IA2	2½" x 2" x 9"	2 to 30	3
IA2H	2½" x 2" x 9"	25 & 30	3
IA2EH	3" x 2" x 9"	5 to 50	3
IA2EXH	3" x 2" x 10"	7.5 to 60	3
IA2HH	3" x 2" x 10"	30 & 40	3
IA2½	3" x 2½" x 9"	3 to 40	3
IA2½H	4" x 2½" x 9"	40 to 100	3
IA2½BJM	4" x 2½" x 13"	15 to 30	3
IA3	4" x 3" x 9"	3 to 50	3
IA3H	4" x 3" x 9"	30 to 75	3
IA3BJM	4" x 3" x 13½"	15 to 40	3
IA4	6" x 4" x 10"	5 to 125	3
IA4BJH	6" x 4" x 13"	20 to 75	3
IA6BJM	8" x 6" x 13"	30 to 75	3

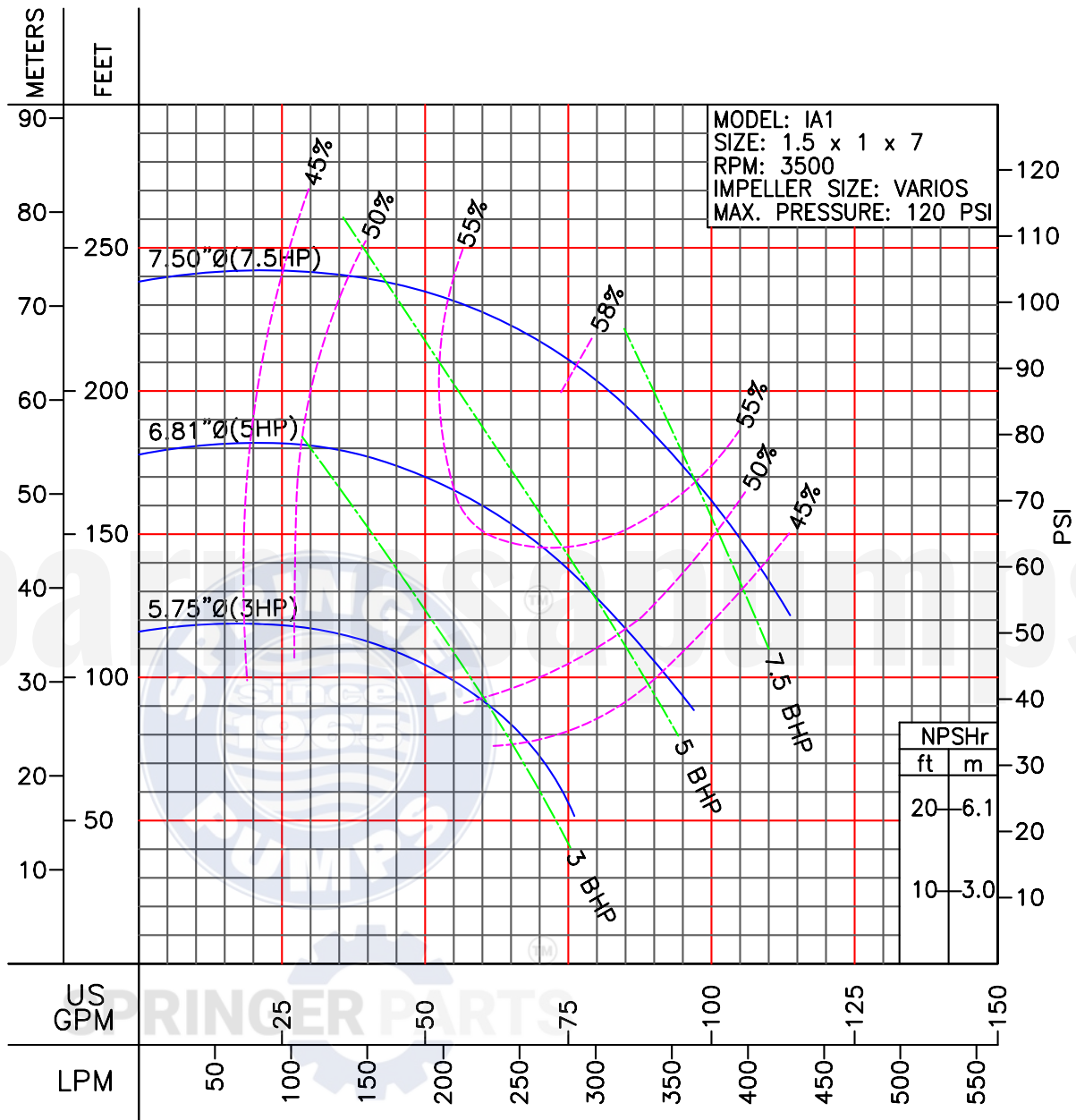
For dimensions and weights please contact factory.

**IMPORTANT!**

1. Never use this pump to handle explosive liquids.
2. This pump is not approved to be used in swimming pools, recreational installations or any application where human contact may be common.

PERFORMANCE CURVES

MODEL: **IA1**  
RPM: 3500

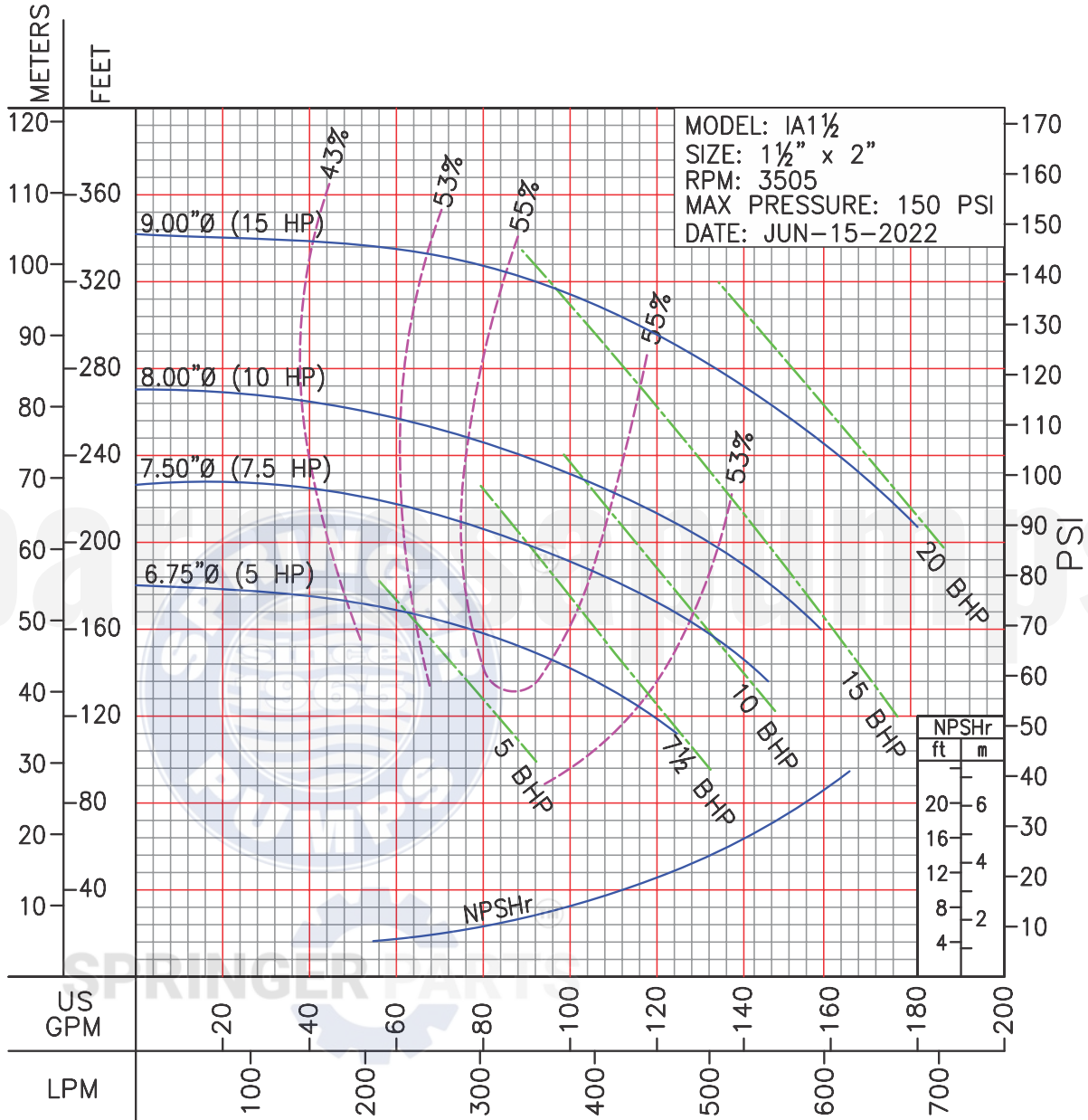


LIQUID: WATER  
SPECIFIC GRAVITY : 1.00

TEMPERATURE: 70 °F (21 °C)  
MAXIMUM DIAM. SOLIDS: 0.21"

PERFORMANCE CURVES

MODEL: IA1½  
RPM: 3505



IMPORTANT!

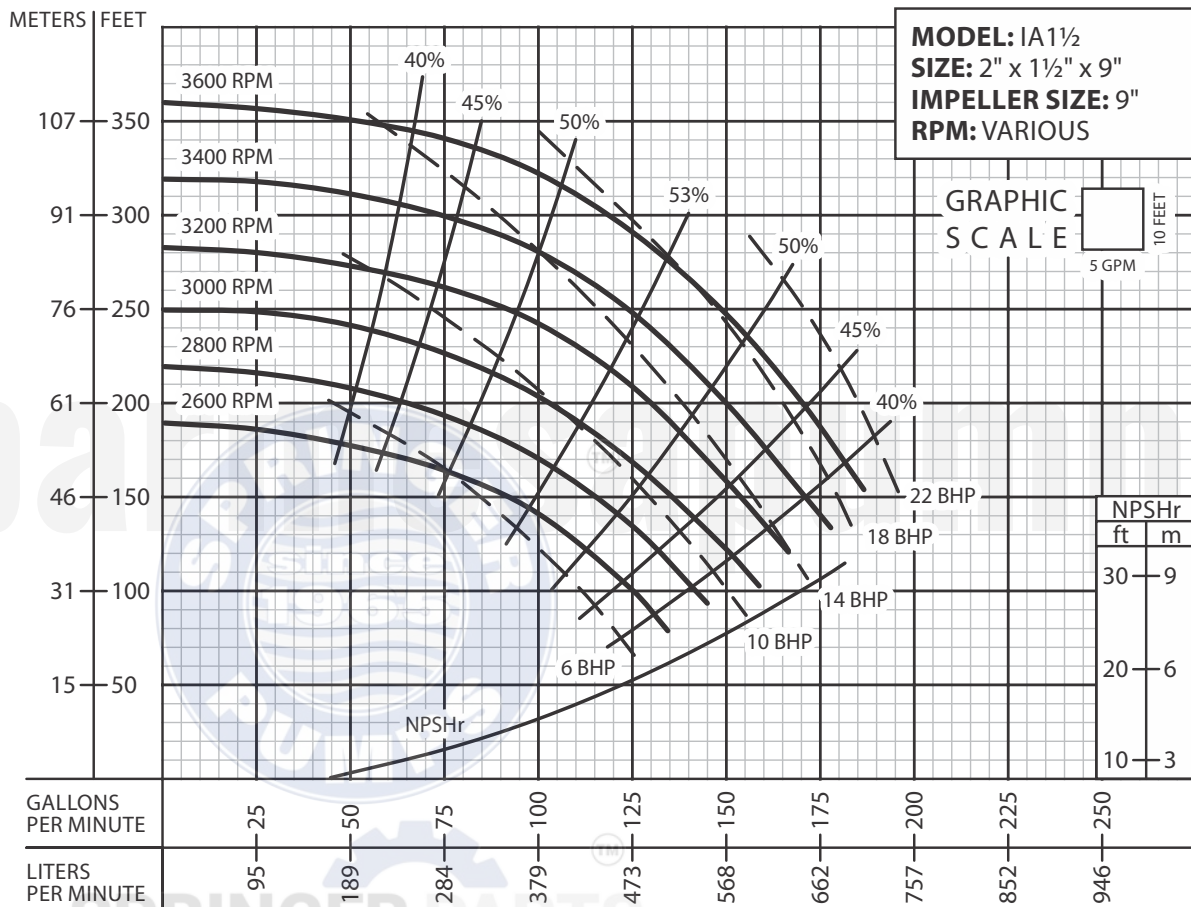
1. Testing is performed with water specific gravity of 1.0 @ 68°F (20°C); other fluids may vary performance.

North America: 866 777 6060  
Int'l: +1 267 404 2910

Springer Pumps  
Springer Parts

[barnesapumps.com/US](http://barnesapumps.com/US)  
[www.springerpumps.com](http://www.springerpumps.com)  
[www.springerparts.com](http://www.springerparts.com)

MODEL: IA1½  
RPM: VARIOUS



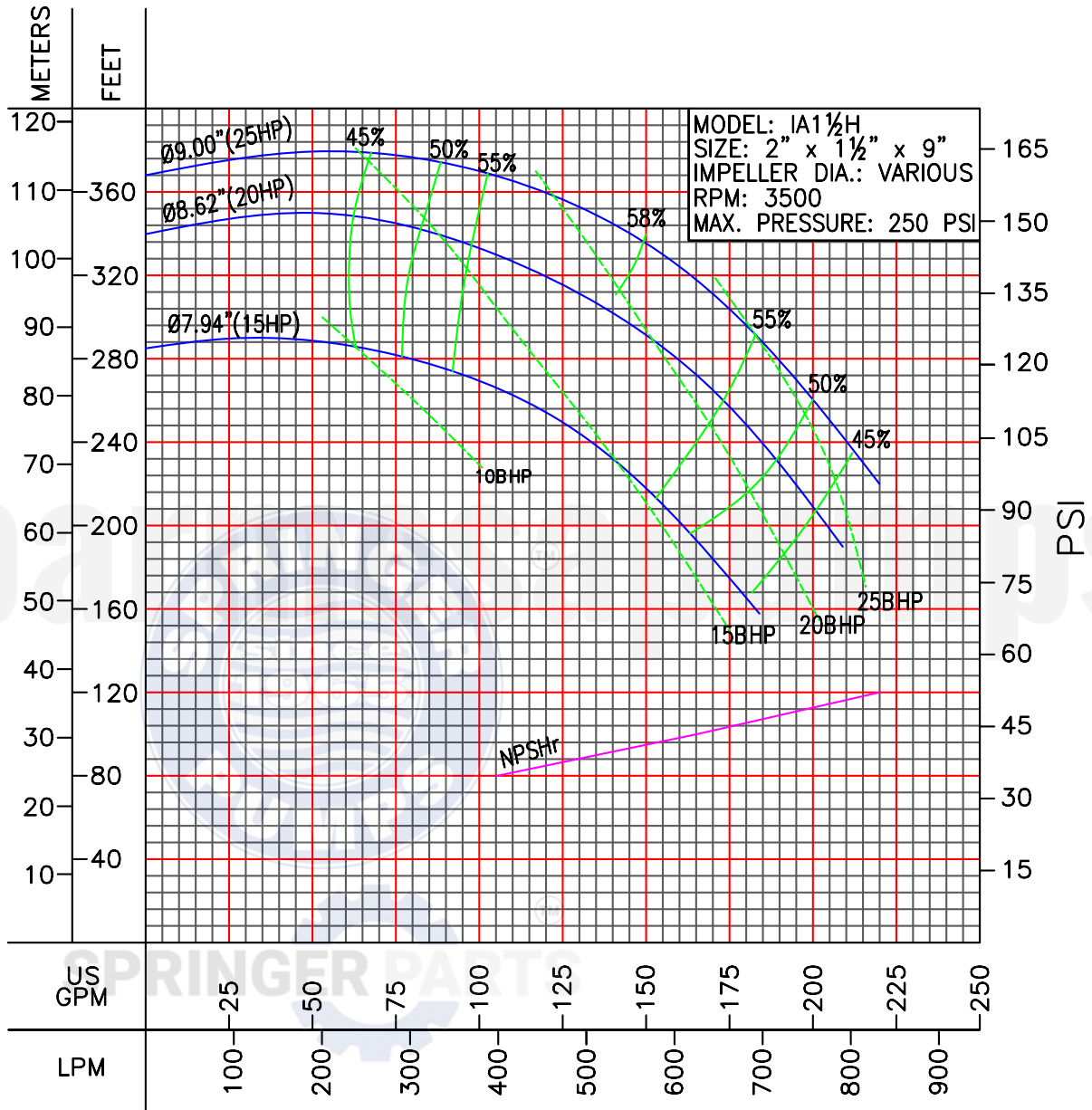
**IMPORTANT!**

1. Testing is performed with water specific gravity of 1.0 @ 68 °F (20 °C); other fluids may vary performance.

North America: 866 777 6060  
Int'l: +1 267 404 2910

Springer Pumps  
Springer Parts

[barnesapumps.com/US](http://barnesapumps.com/US)  
[www.springerpumps.com](http://www.springerpumps.com)  
[www.springerparts.com](http://www.springerparts.com)



**IMPORTANT!**

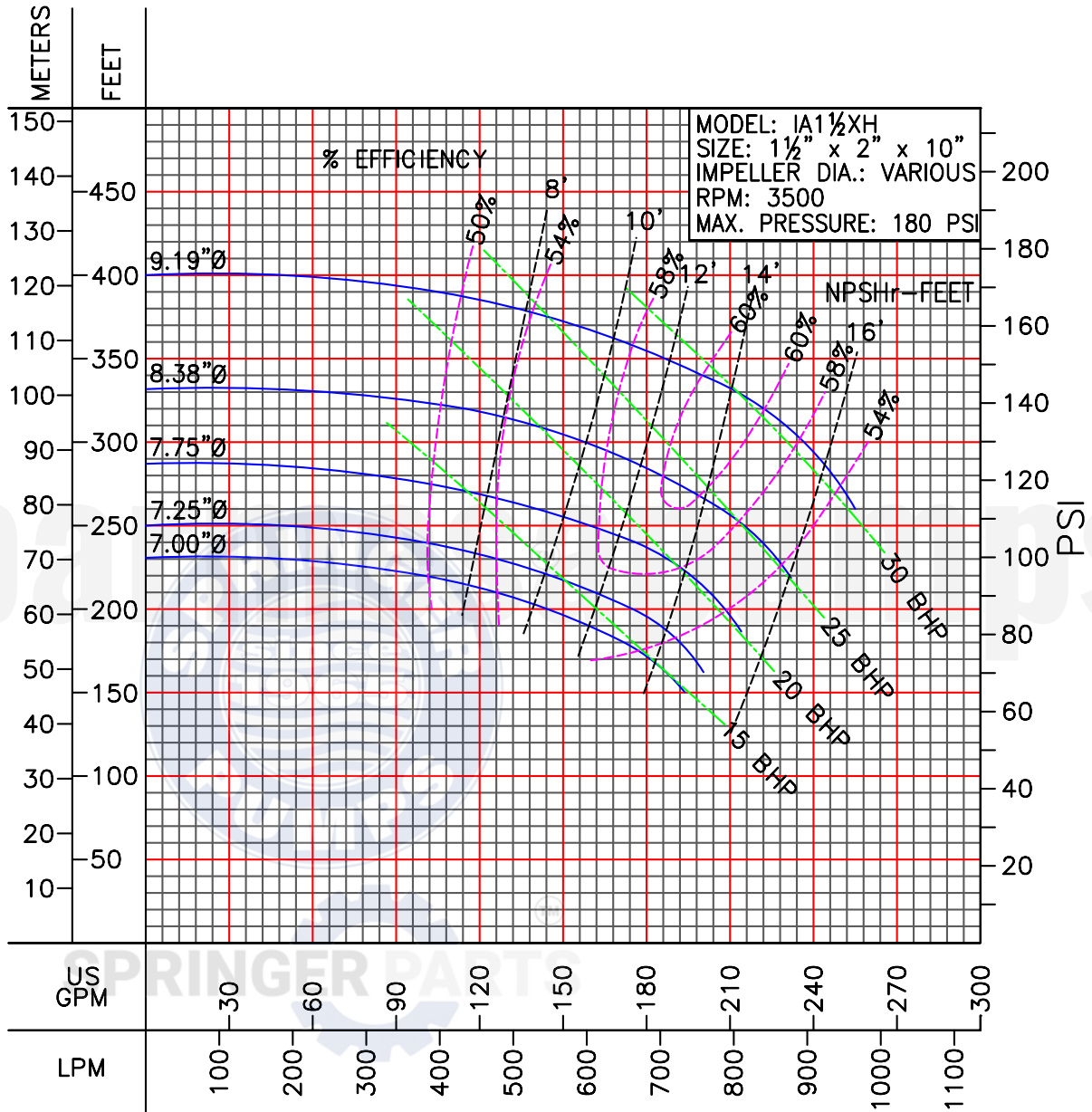
1. Testing is performed with water specific gravity of 1.0 @ 68°F (20°C); other fluids may vary performance.



PERFORMANCE CURVES

MODEL: IA1½XH

RPM: 3500



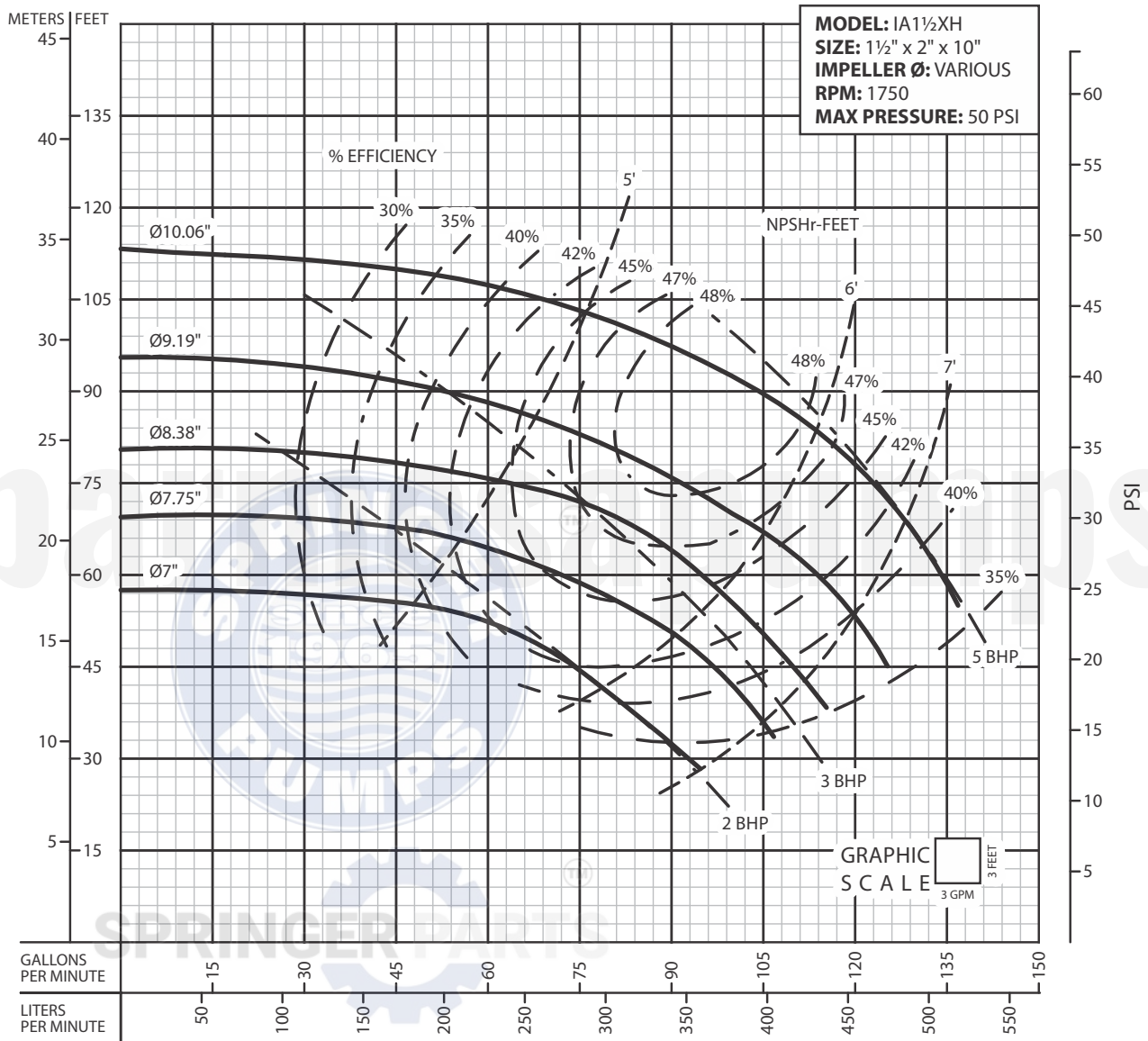
IMPORTANT!

1. Testing is performed with water specific gravity of 1.0 @ 68°F (20°C); other fluids may vary performance.

North America: 866 777 6060  
Int'l: +1 267 404 2910

Springer Pumps  
Springer Parts

[barnesapumps.com/US](http://barnesapumps.com/US)  
[www.springerpumps.com](http://www.springerpumps.com)  
[www.springerparts.com](http://www.springerparts.com)

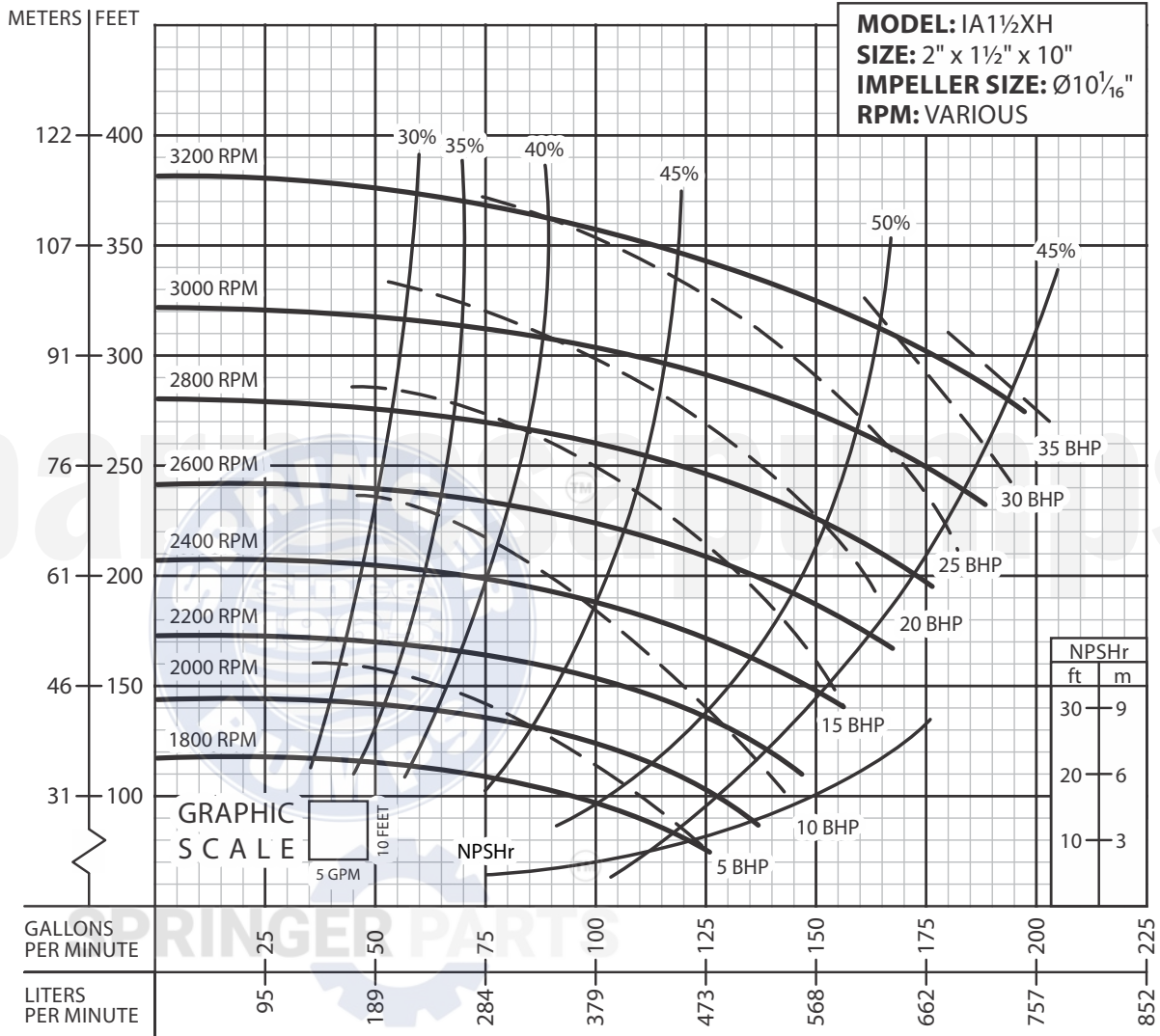


**IMPORTANT!**

1. Testing is performed with water specific gravity of 1.0 @ 68 °F (20 °C); other fluids may vary performance.



MODEL: **IA1½XH**  
RPM: VARIOUS



**IMPORTANT!**

1. Testing is performed with water specific gravity of 1.0 @ 68 °F (20 °C); other fluids may vary performance.

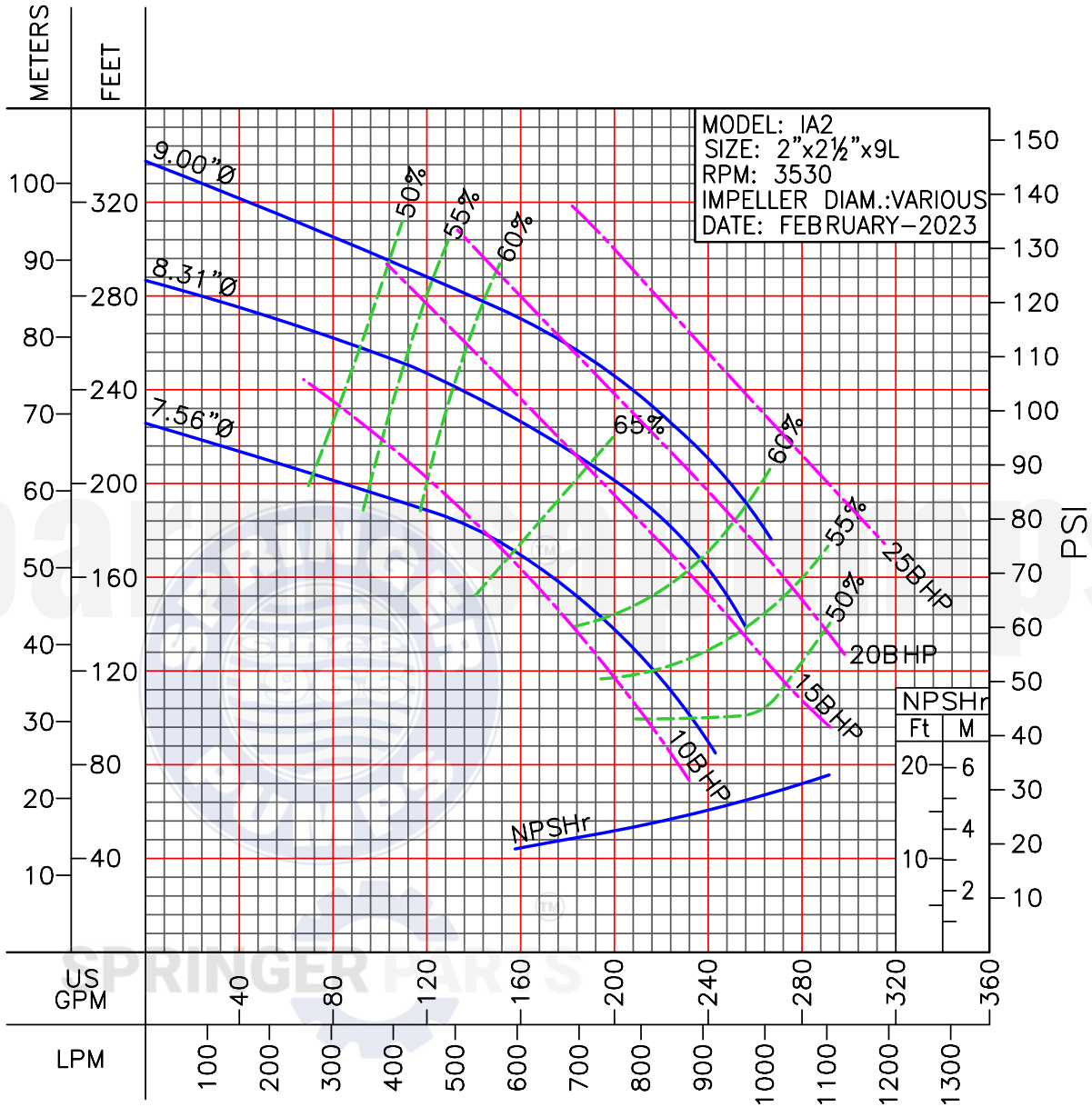
North America: 866 777 6060  
Int'l: +1 267 404 2910

Springer Pumps  
Springer Parts

[barnesapumps.com/US](http://barnesapumps.com/US)  
[www.springerpumps.com](http://www.springerpumps.com)  
[www.springerparts.com](http://www.springerparts.com)

PERFORMANCE CURVES

MODEL: **IA2**  
RPM: 3530



**IMPORTANT!**

1. Testing is performed with water specific gravity of 1.0 @ 68°F (20°C); other fluids may vary performance.

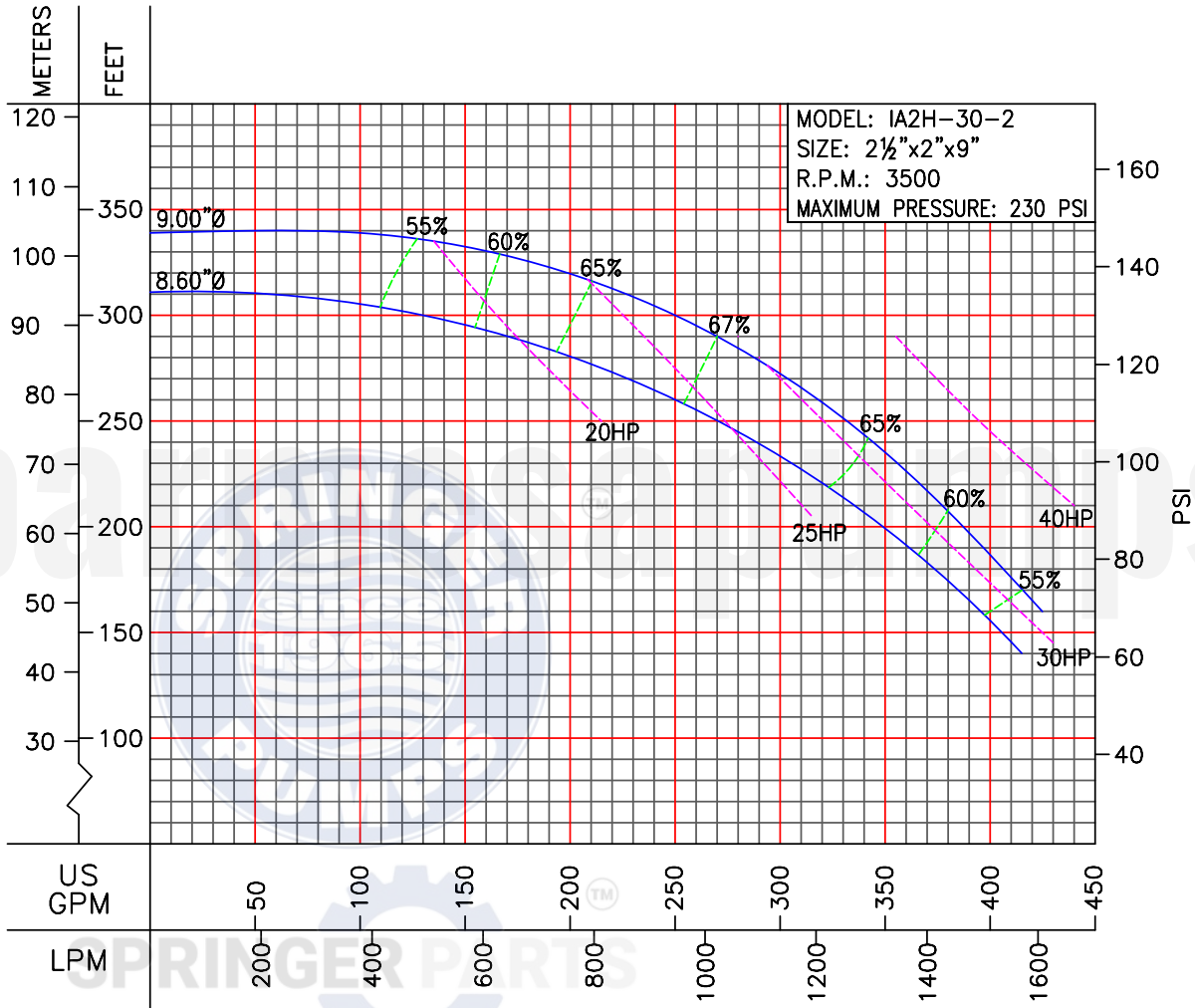
North America: 866 777 6060  
Int'l: +1 267 404 2910

Springer Pumps  
Springer Parts

[barnesapumps.com/US](http://barnesapumps.com/US)  
[www.springerpumps.com](http://www.springerpumps.com)  
[www.springerparts.com](http://www.springerparts.com)

PERFORMANCE CURVES

MODEL: **IA2H**  
RPM: 3500



**IMPORTANT!**

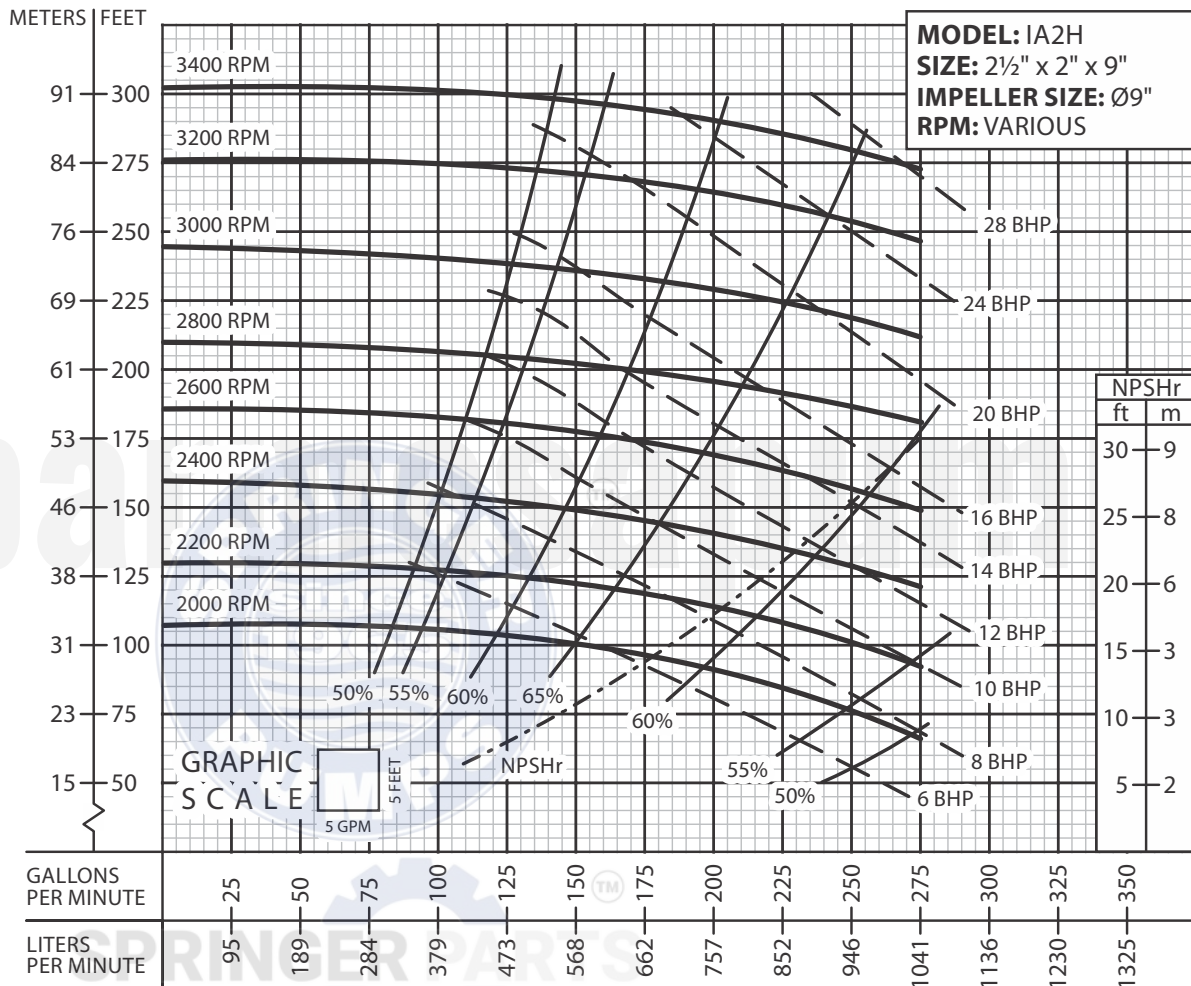
1. Testing is performed with water specific gravity of 1.0 @ 68°F (20°C); other fluids may vary performance.

North America: 866 777 6060  
Int'l: +1 267 404 2910

Springer Pumps  
Springer Parts

[barnesapumps.com/US](http://barnesapumps.com/US)  
[www.springerpumps.com](http://www.springerpumps.com)  
[www.springerparts.com](http://www.springerparts.com)

MODEL: **IA2H**  
RPM: VARIOUS



**IMPORTANT!**

1. Testing is performed with water specific gravity of 1.0 @ 68°F (20°C); other fluids may vary performance.

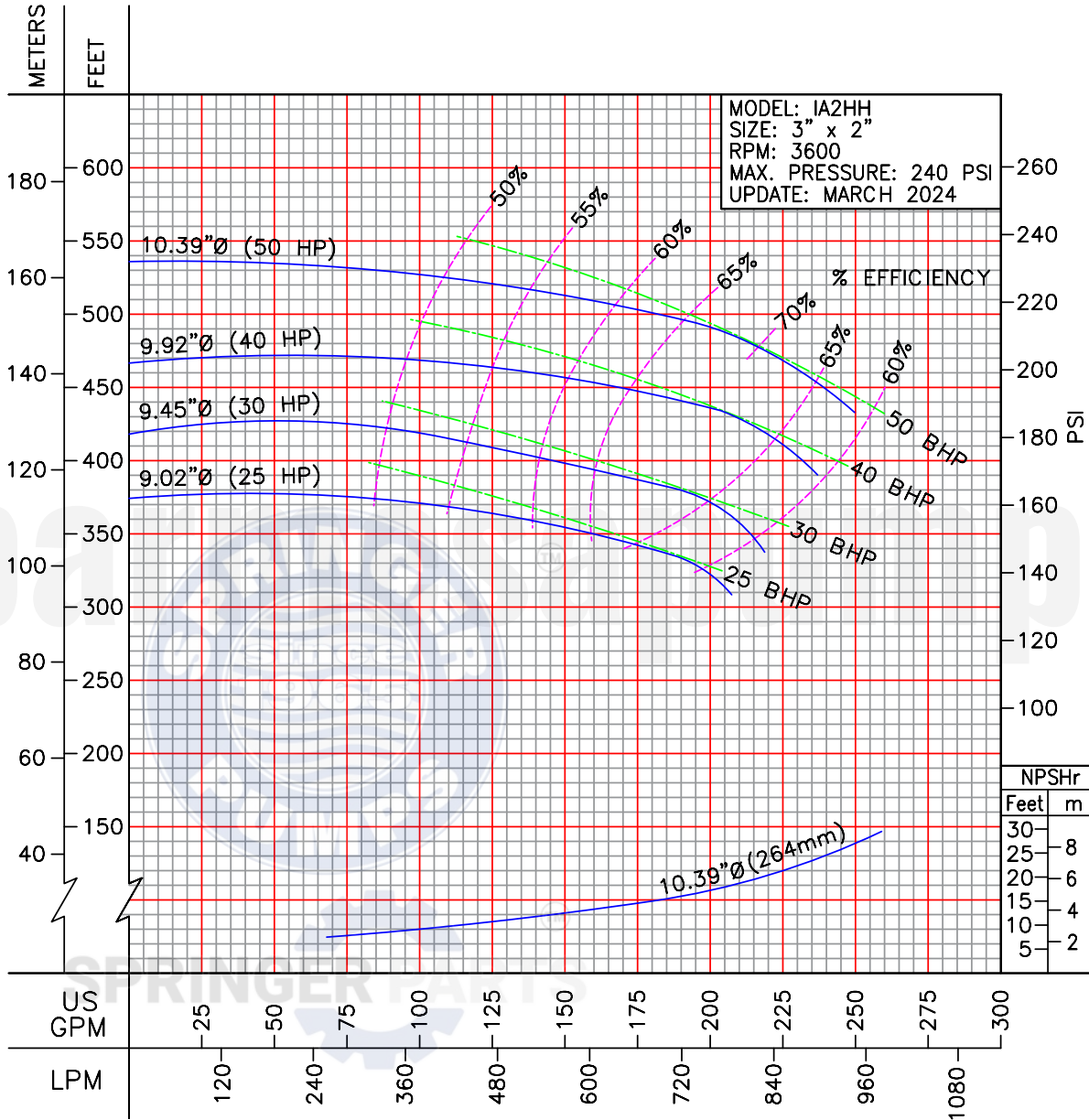
North America: 866 777 6060  
Int'l: +1 267 404 2910

Springer Pumps  
Springer Parts

[barnesapumps.com/US](http://barnesapumps.com/US)  
[www.springerpumps.com](http://www.springerpumps.com)  
[www.springerparts.com](http://www.springerparts.com)

PERFORMANCE CURVES

MODEL: IA2HH  
RPM: 3600



IMPORTANT!

1. Testing is performed with water specific gravity of 1.0 @ 68°F (20°C); other fluids may vary performance.

North America: 866 777 6060  
Int'l: +1 267 404 2910

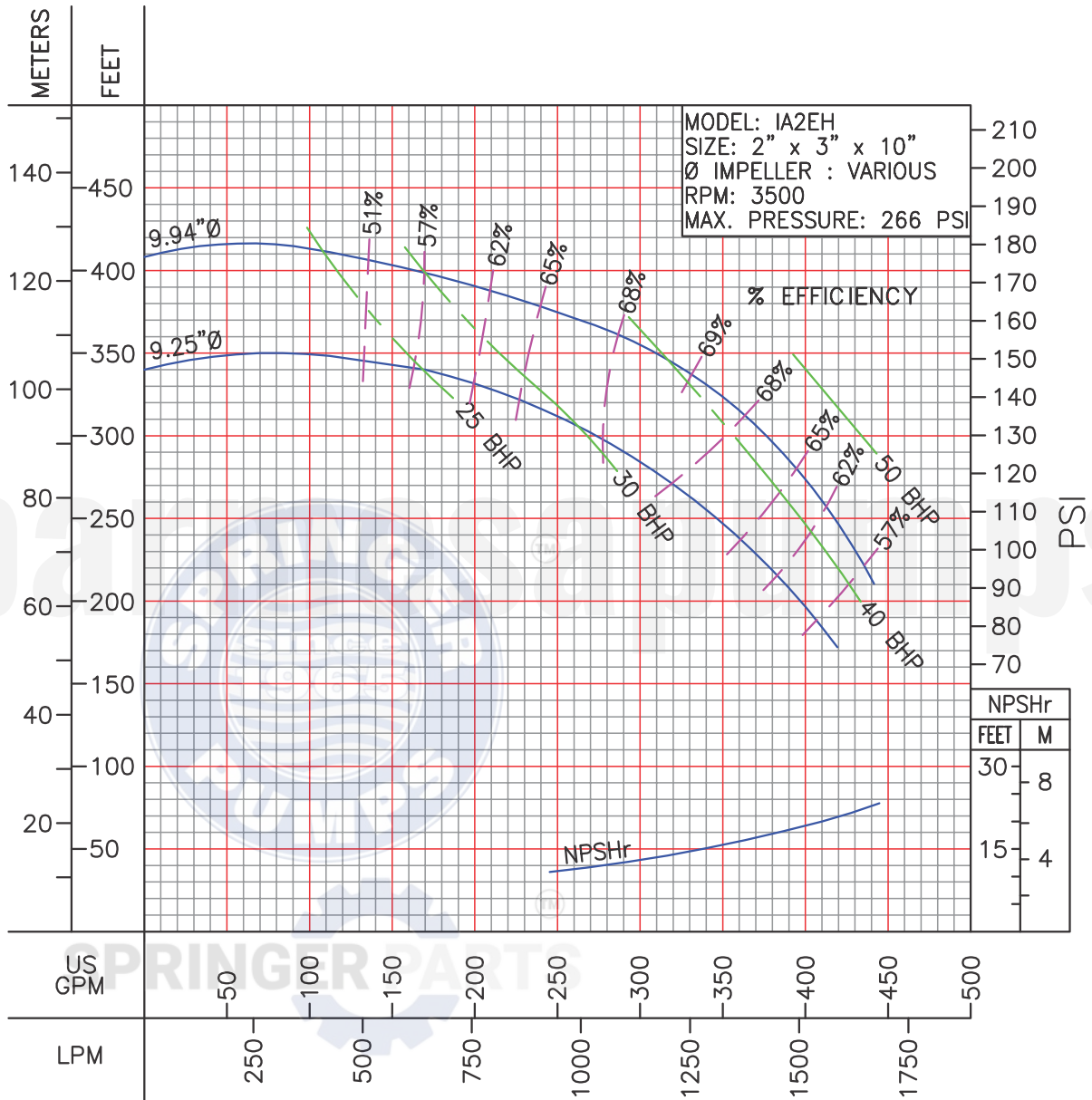
Springer Pumps  
Springer Parts

[barnesapumps.com/US](http://barnesapumps.com/US)  
[www.springerpumps.com](http://www.springerpumps.com)  
[www.springerparts.com](http://www.springerparts.com)

PERFORMANCE CURVES

MODEL: IA2EH

RPM: 3500



IMPORTANT!

1. Testing is performed with water specific gravity of 1.0 @ 68°F (20°C); other fluids may vary performance.

North America: 866 777 6060  
 Int'l: +1 267 404 2910

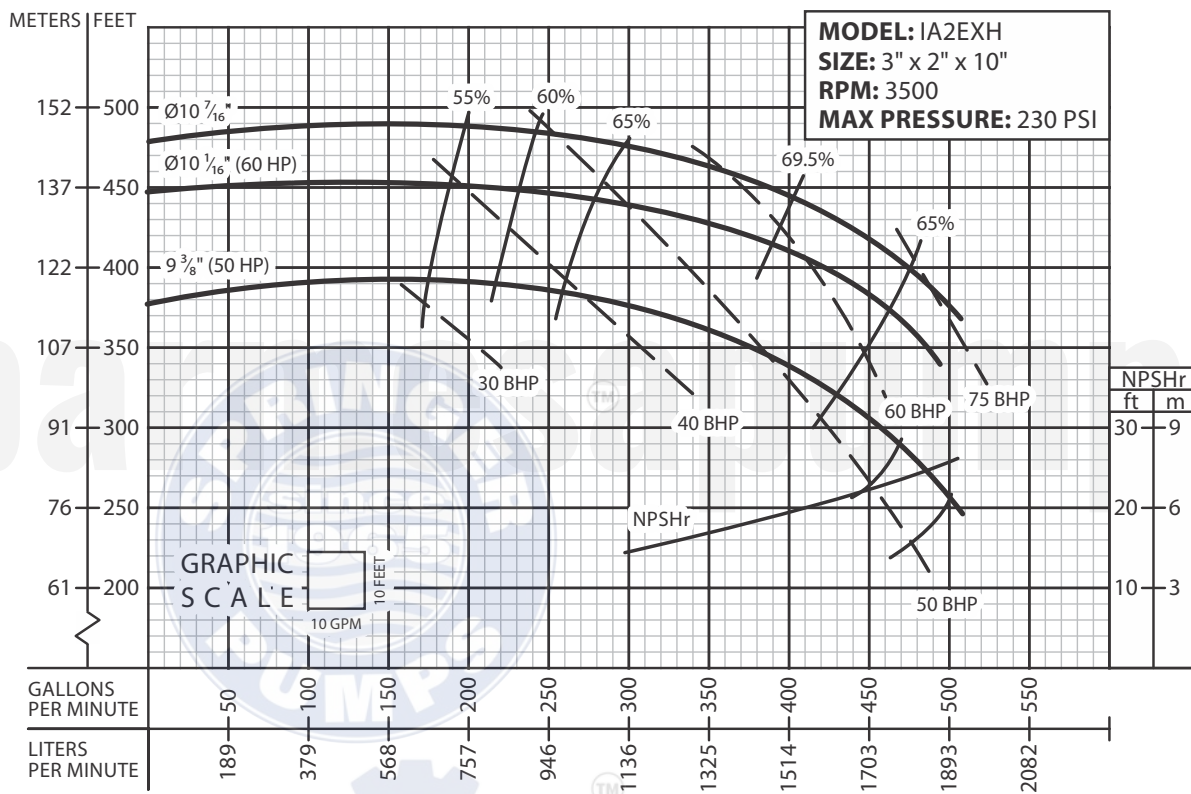
Springer Pumps  
 Springer Parts

[barmesapumps.com/US](http://barmesapumps.com/US)  
[www.springerpumps.com](http://www.springerpumps.com)  
[www.springerparts.com](http://www.springerparts.com)



MODEL: **IA2EXH**

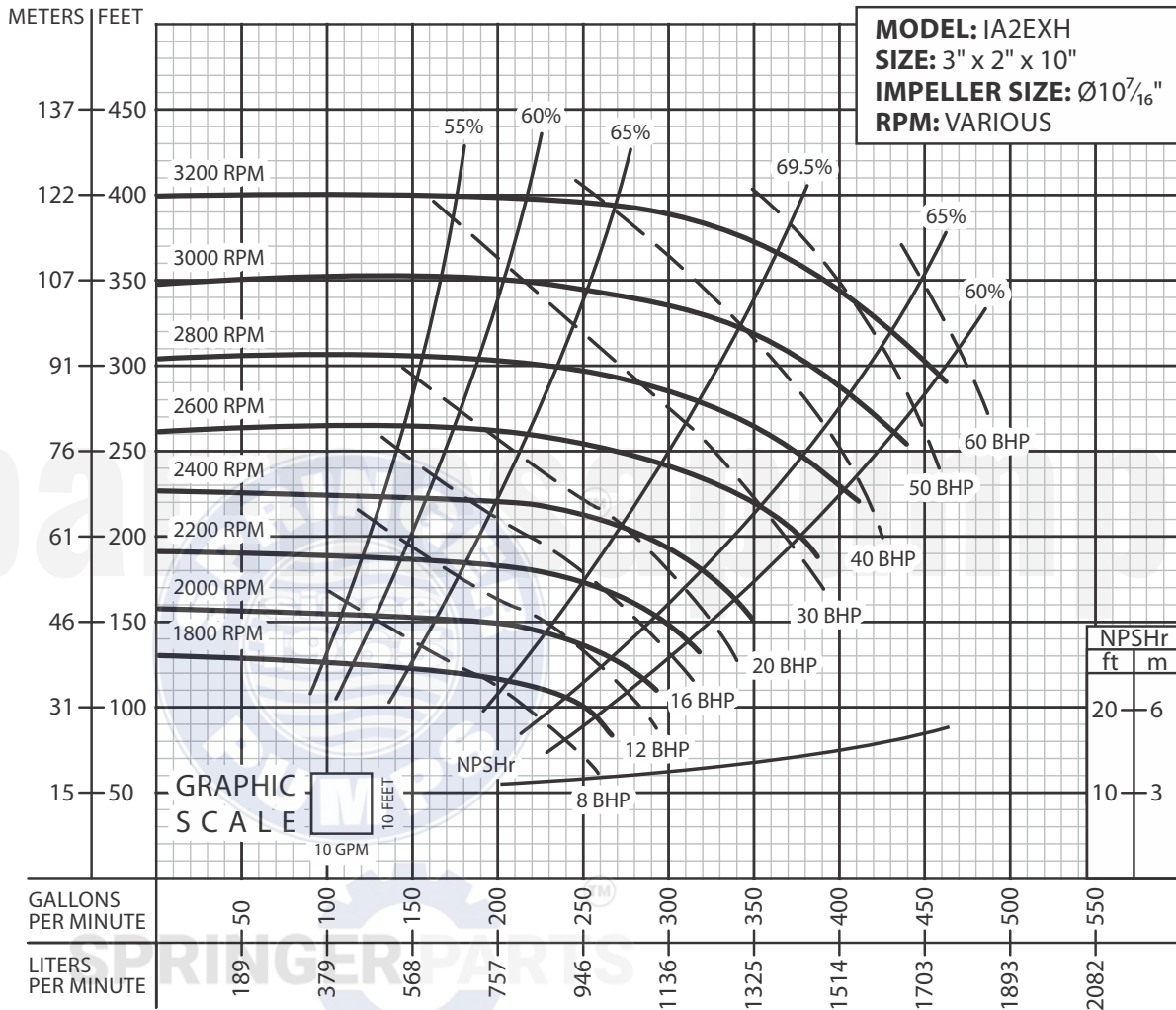
RPM: 3500



**IMPORTANT!**

1. Testing is performed with water specific gravity of 1.0 @ 68°F (20°C); other fluids may vary performance.

MODEL: **IA2EXH**  
RPM: VARIOUS



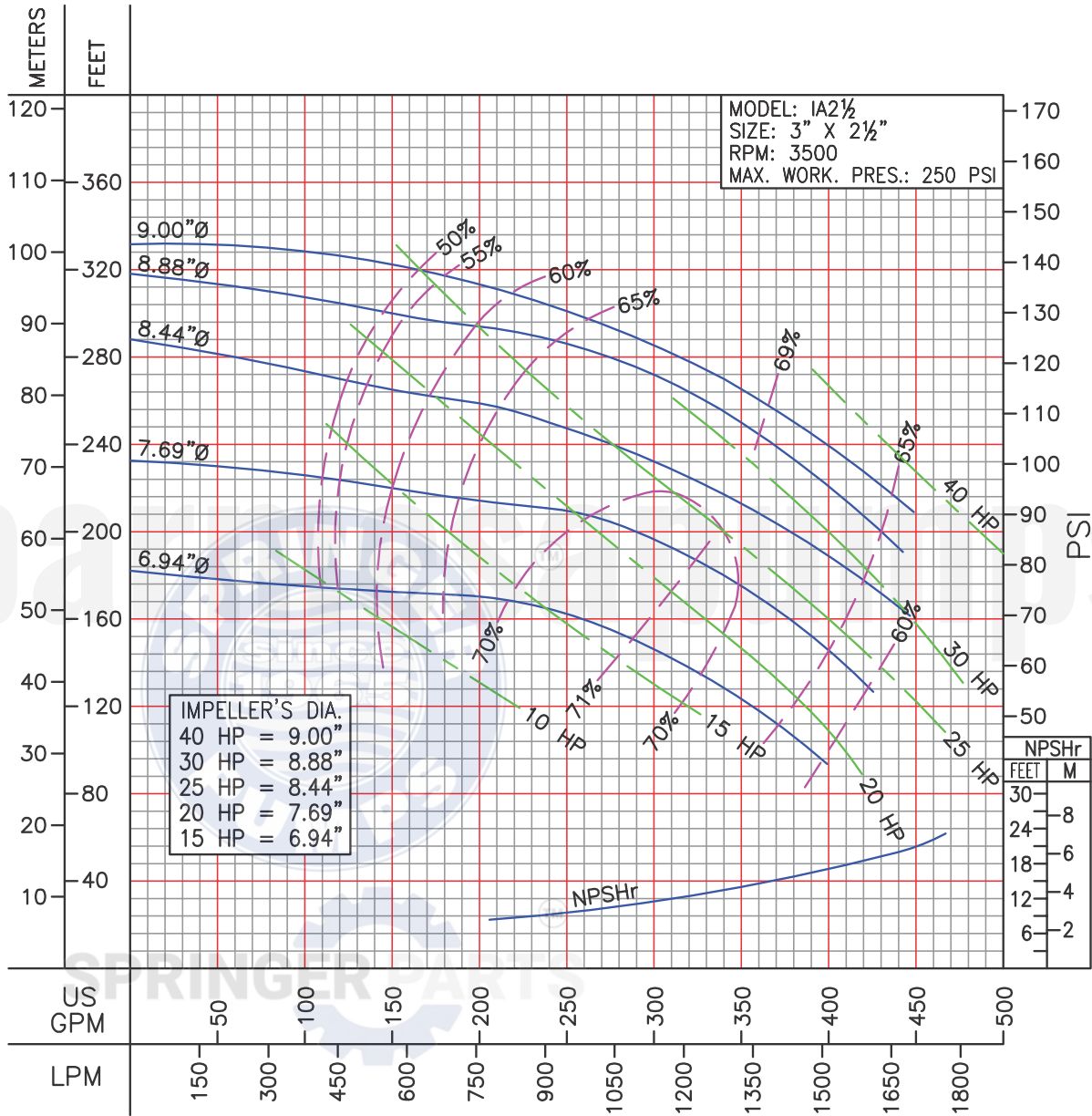
**IMPORTANT!**

1. Testing is performed with water specific gravity of 1.0 @ 68 °F (20 °C); other fluids may vary performance.

North America: 866 777 6060  
Int'l: +1 267 404 2910

Springer Pumps  
Springer Parts

[barmesapumps.com/US](http://barmesapumps.com/US)  
[www.springerpumps.com](http://www.springerpumps.com)  
[www.springerparts.com](http://www.springerparts.com)

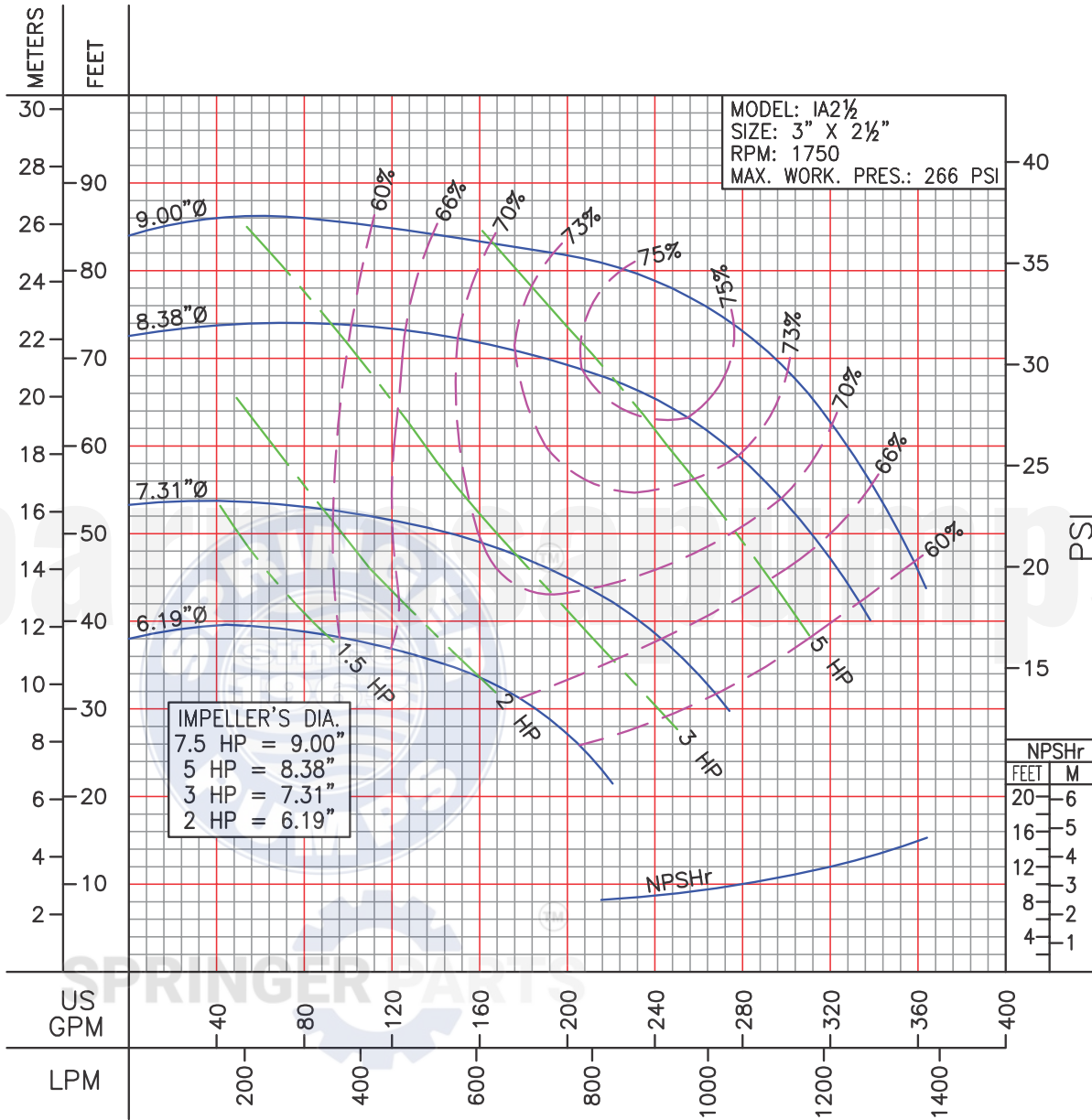


**IMPORTANT!**

1. Testing is performed with water specific gravity of 1.0 @ 68°F (20°C); other fluids may vary performance.

PERFORMANCE CURVES

MODEL: IA2½  
RPM: 1750



**IMPORTANT!**

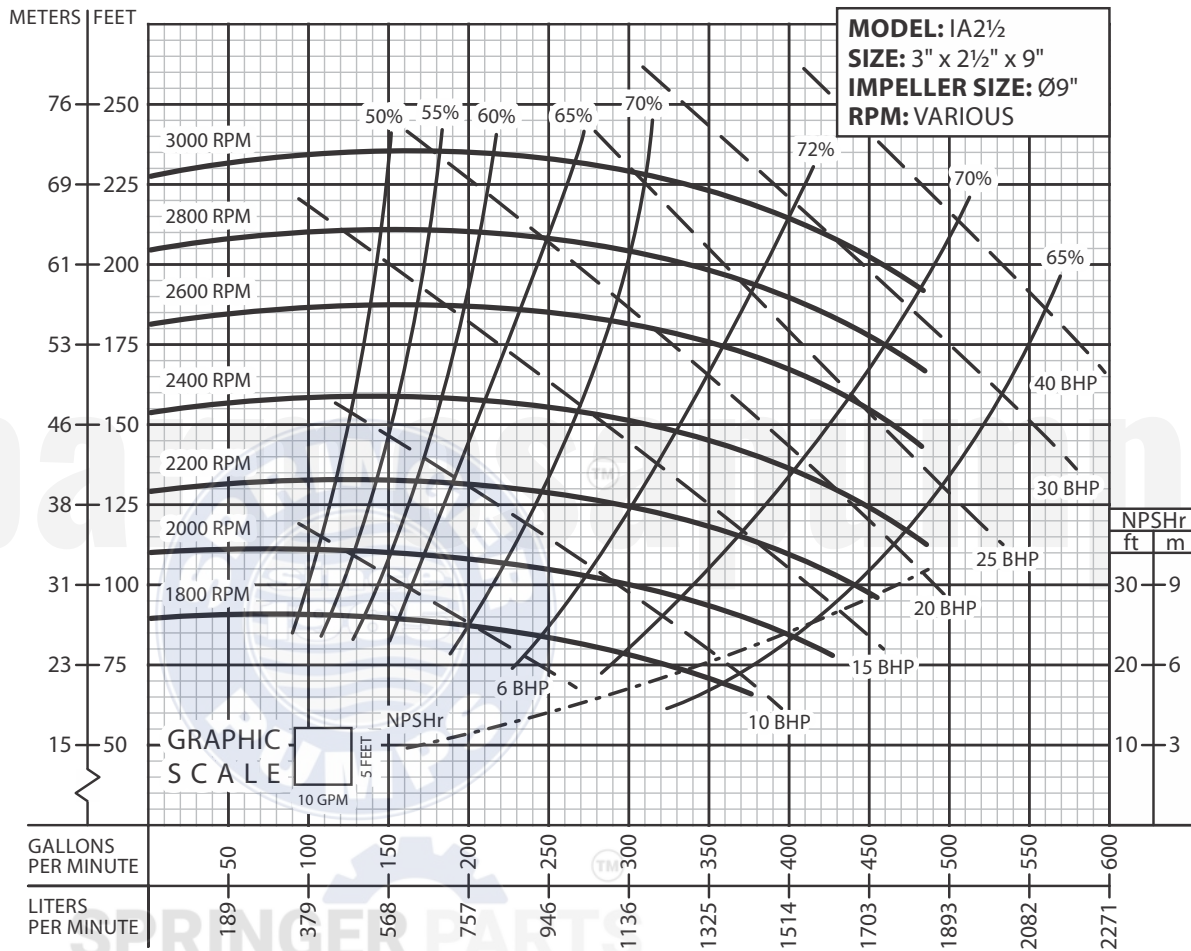
1. Testing is performed with water specific gravity of 1.0 @ 68°F (20°C); other fluids may vary performance.

North America: 866 777 6060  
Int'l: +1 267 404 2910

Springer Pumps  
Springer Parts

[barnesapumps.com/US](http://barnesapumps.com/US)  
[www.springerpumps.com](http://www.springerpumps.com)  
[www.springerparts.com](http://www.springerparts.com)

MODEL: IA2½  
RPM: VARIOUS



**IMPORTANT!**

1. Testing is performed with water specific gravity of 1.0 @ 68 °F (20 °C); other fluids may vary performance.

North America: 866 777 6060  
Int'l: +1 267 404 2910

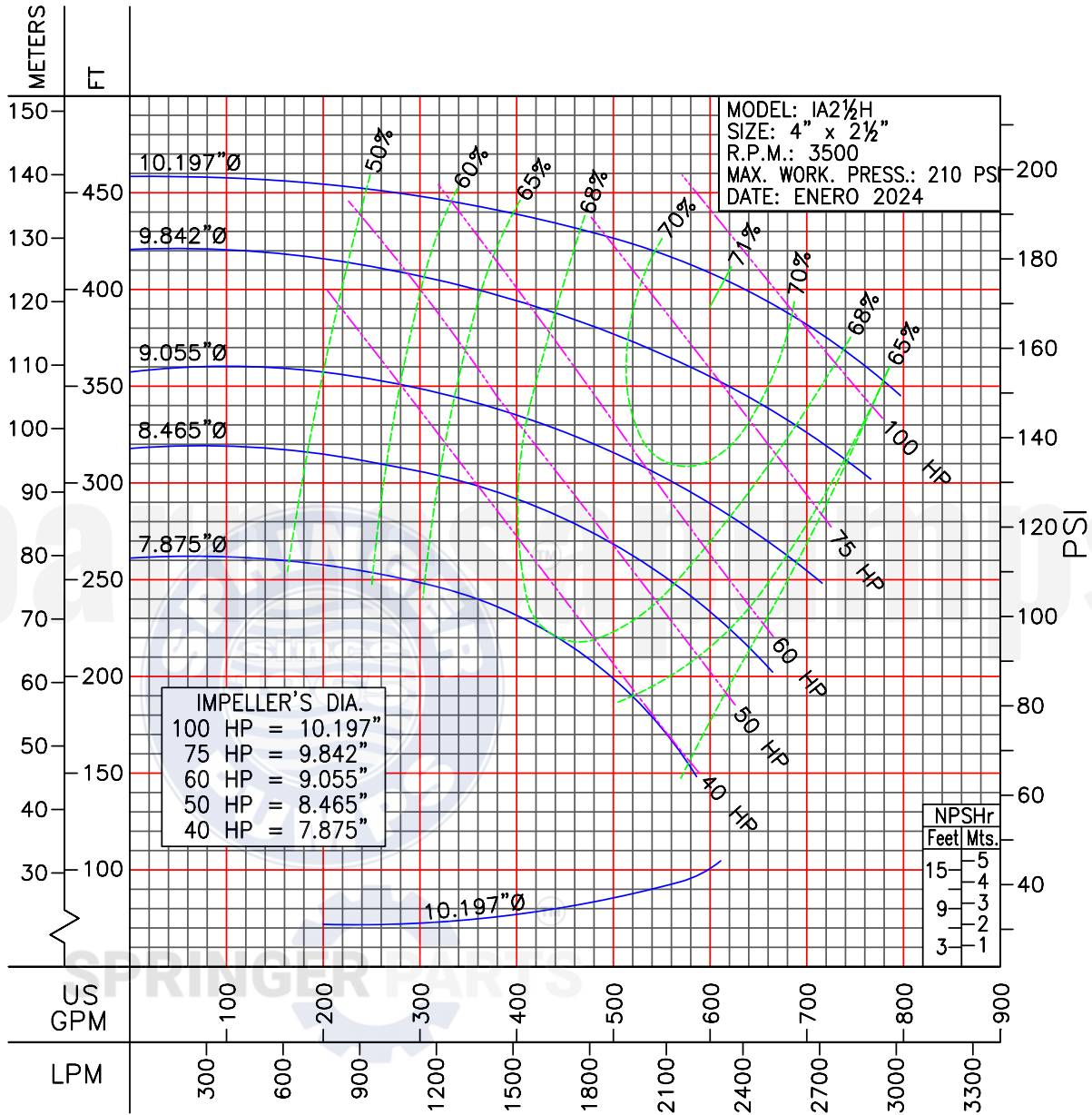
Springer Pumps  
Springer Parts

[barnesapumps.com/US](http://barnesapumps.com/US)  
[www.springerpumps.com](http://www.springerpumps.com)  
[www.springerparts.com](http://www.springerparts.com)

PERFORMANCE CURVES

MODEL: IA2½H

RPM: 3500



**IMPORTANT!**

1. Testing is performed with water specific gravity of 1.0 @ 68°F (20°C); other fluids may vary performance.

[barnesapumps.com/US](http://barnesapumps.com/US)

North America: 866 777 6060

Int'l: +1 267 404 2910

Springer Pumps

Springer Parts

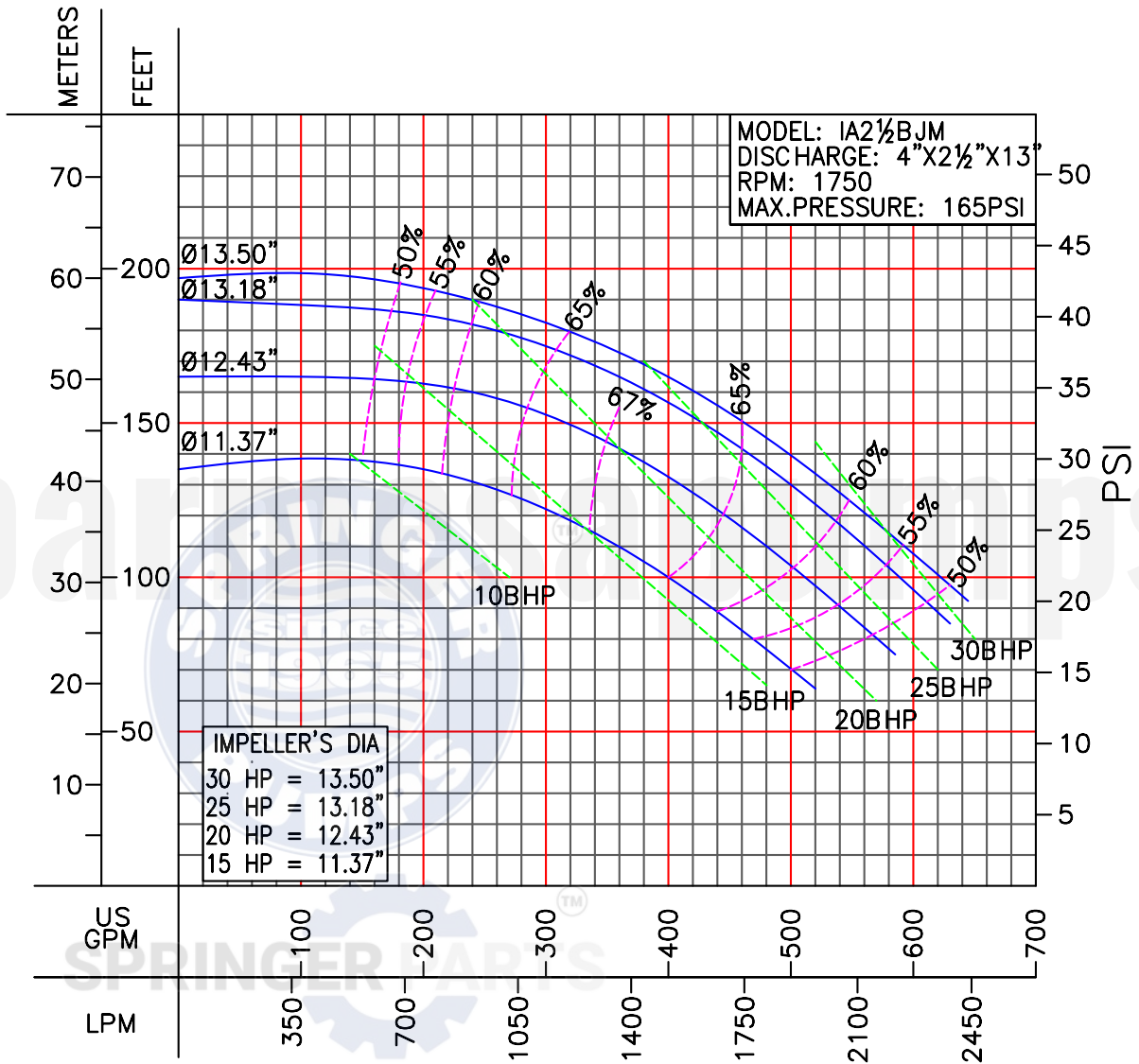
[www.springerpumps.com](http://www.springerpumps.com)

[www.springerparts.com](http://www.springerparts.com)



MODEL: **IA2½BJM**

RPM: 1750



**IMPORTANT!**

1. Testing is performed with water specific gravity of 1.0 @ 68°F (20°C); other fluids may vary performance.

North America: 866 777 6060

Int'l: +1 267 404 2910

Springer Pumps

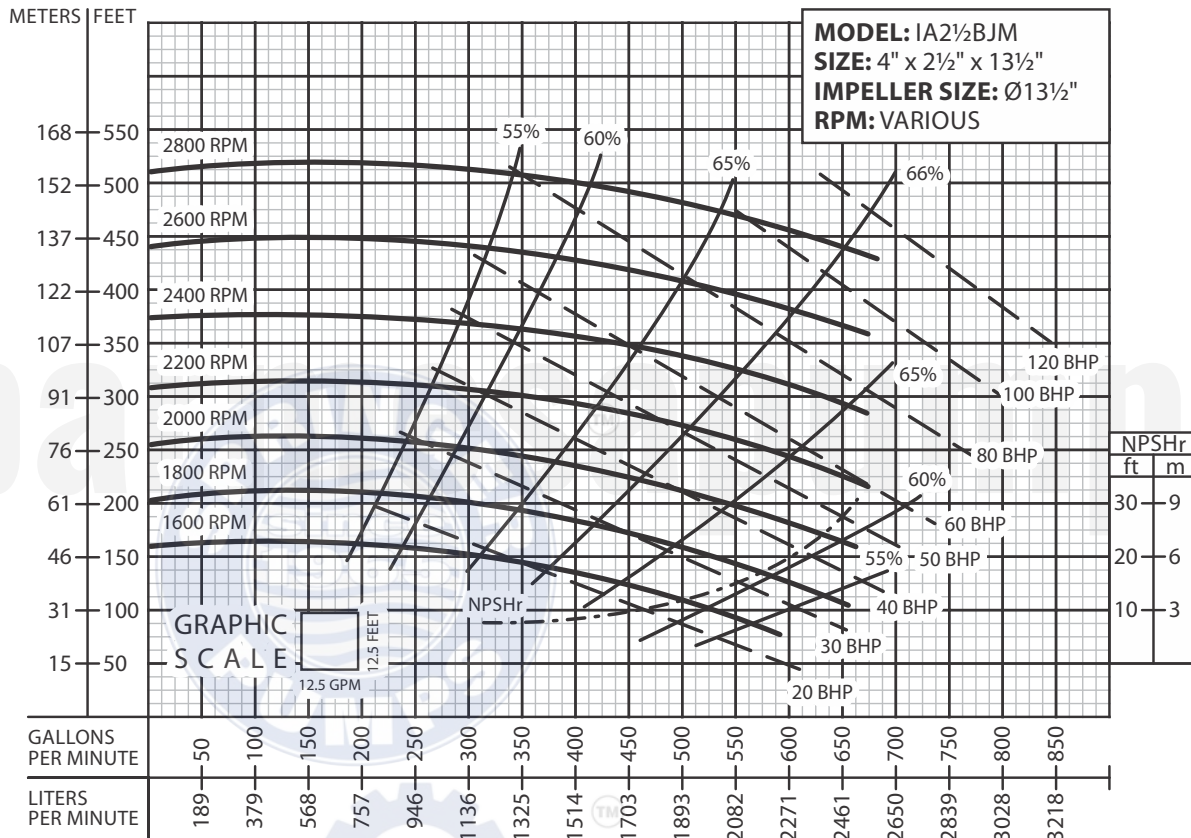
Springer Parts

[barnesapumps.com/US](http://barnesapumps.com/US)

[www.springerpumps.com](http://www.springerpumps.com)

[www.springerparts.com](http://www.springerparts.com)

MODEL: **IA2½BJM**  
RPM: VARIOUS



**IMPORTANT!**

1. Testing is performed with water specific gravity of 1.0 @ 68°F (20°C); other fluids may vary performance.

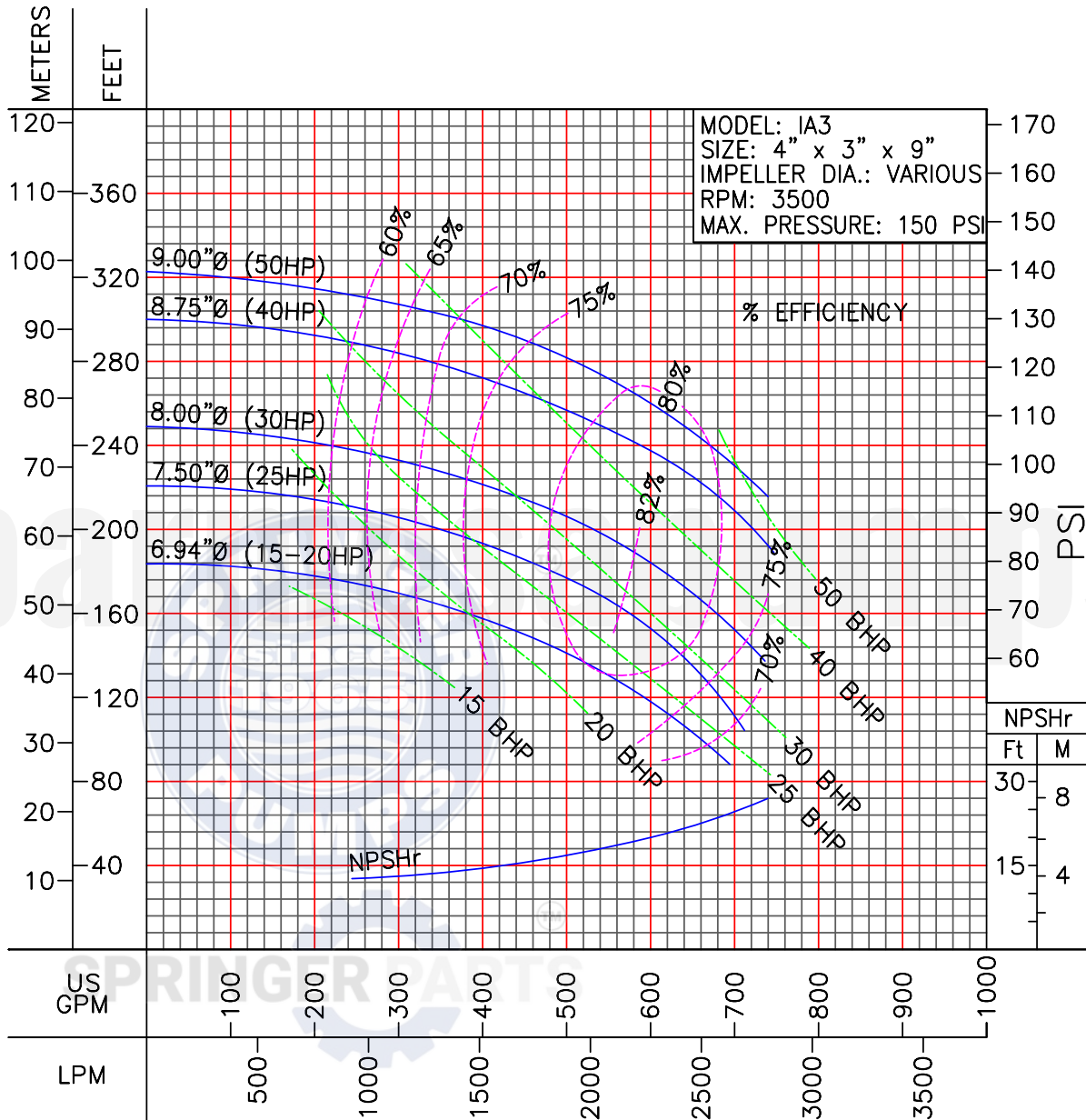
North America: 866 777 6060  
Int'l: +1 267 404 2910

Springer Pumps  
Springer Parts

[barnesapumps.com/US](http://barnesapumps.com/US)  
[www.springerpumps.com](http://www.springerpumps.com)  
[www.springerparts.com](http://www.springerparts.com)

PERFORMANCE CURVES

MODEL: **IA3**  
RPM: 3500



**IMPORTANT!**

1. Testing is performed with water specific gravity of 1.0 @ 68°F (20°C); other fluids may vary performance.

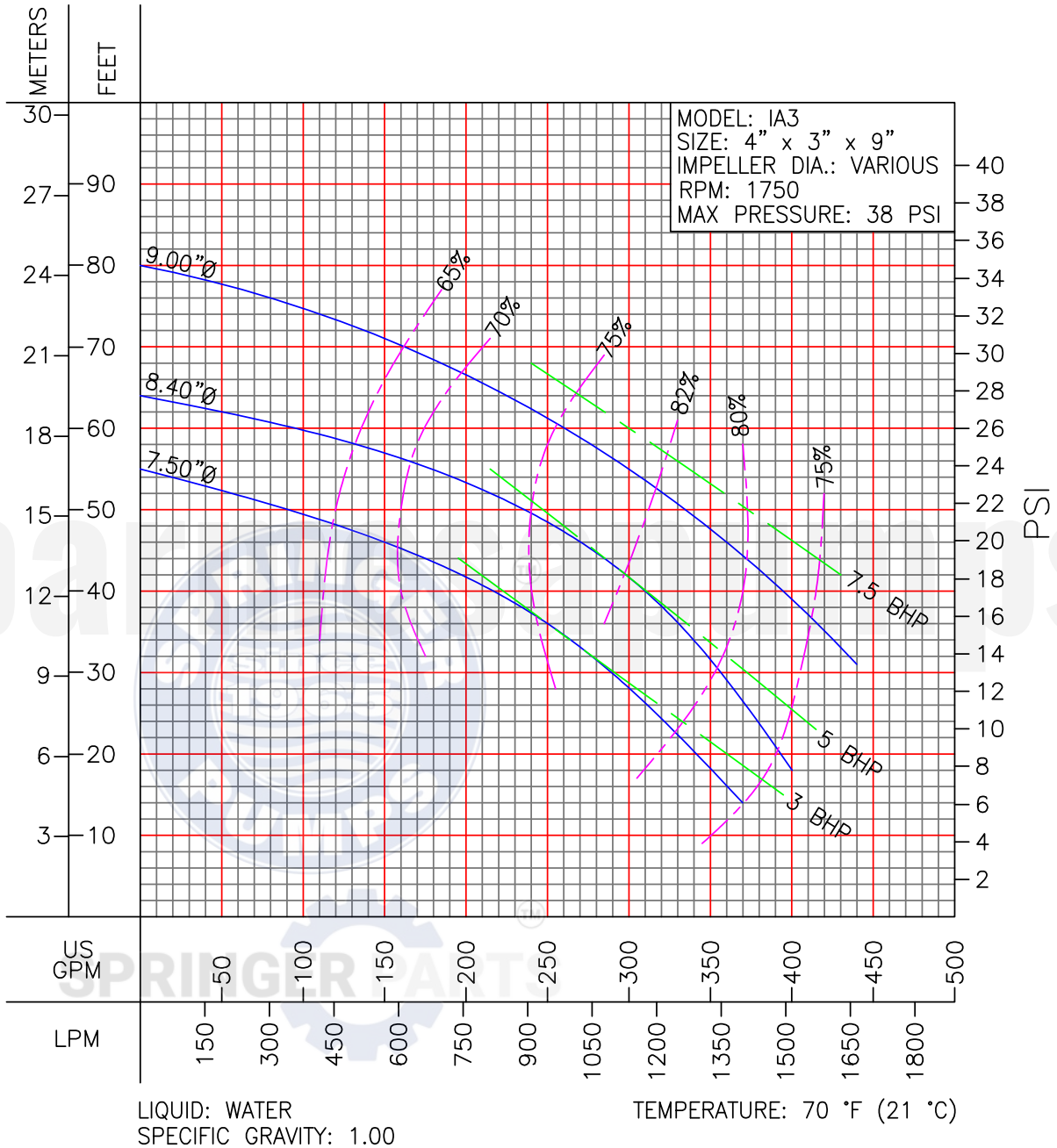
North America: 866 777 6060  
Int'l: +1 267 404 2910

Springer Pumps  
Springer Parts

[barnesapumps.com/US](http://barnesapumps.com/US)  
[www.springerpumps.com](http://www.springerpumps.com)  
[www.springerparts.com](http://www.springerparts.com)

PERFORMANCE CURVES

MODEL: **IA3**  
RPM: 1750



**IMPORTANT!**

1. Testing is performed with water specific gravity of 1.0 @ 68 °F (20 °C); other fluids may vary performance.

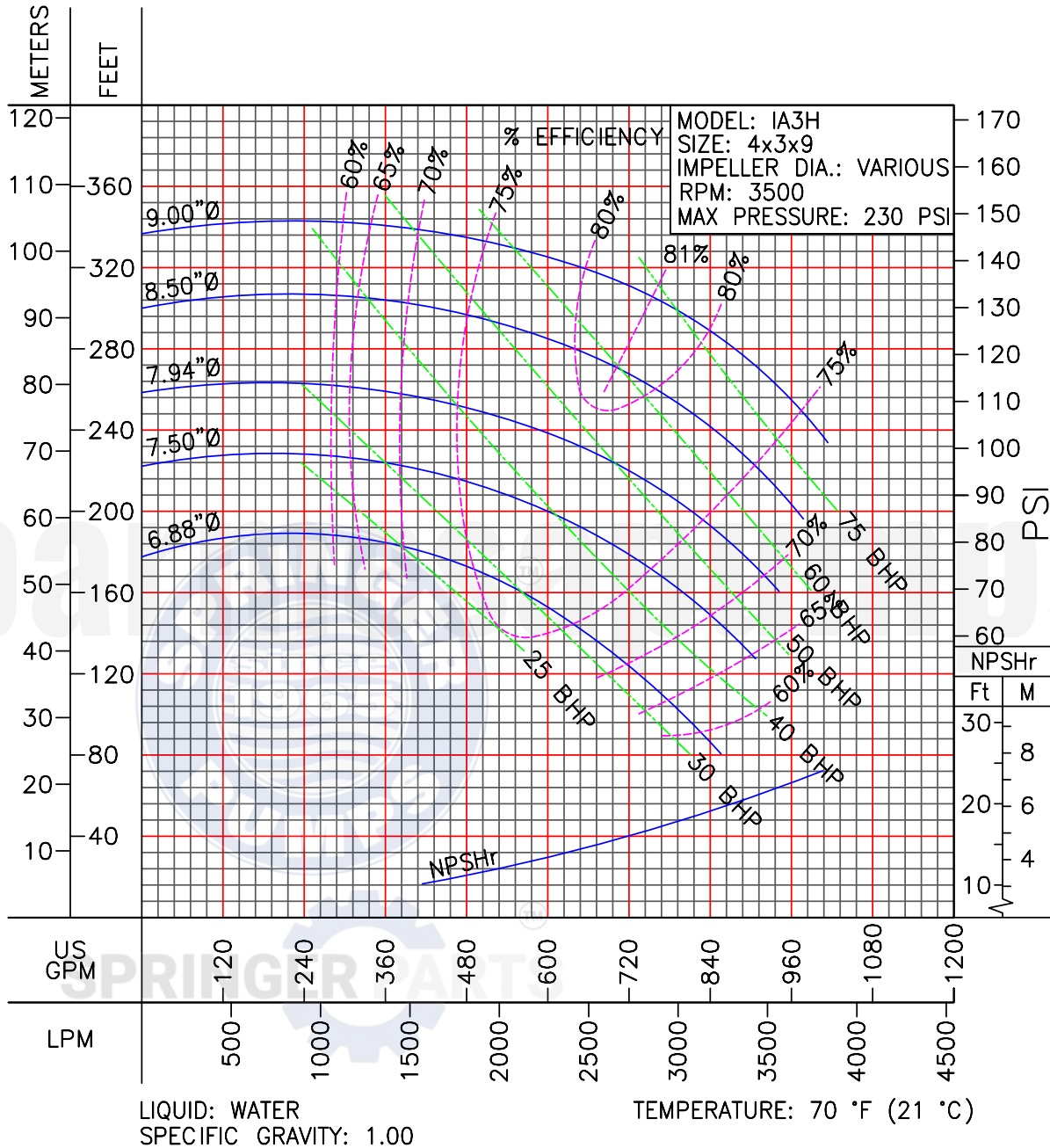
North America: 866 777 6060  
Int'l: +1 267 404 2910

Springer Pumps  
Springer Parts

[barnesapumps.com/US](http://barnesapumps.com/US)  
[www.springerpumps.com](http://www.springerpumps.com)  
[www.springerparts.com](http://www.springerparts.com)

PERFORMANCE CURVES

MODEL: IA3H  
RPM: 3500



IMPORTANT!

1. Testing is performed with water specific gravity of 1.0 @ 68 °F (20 °C); other fluids may vary performance.

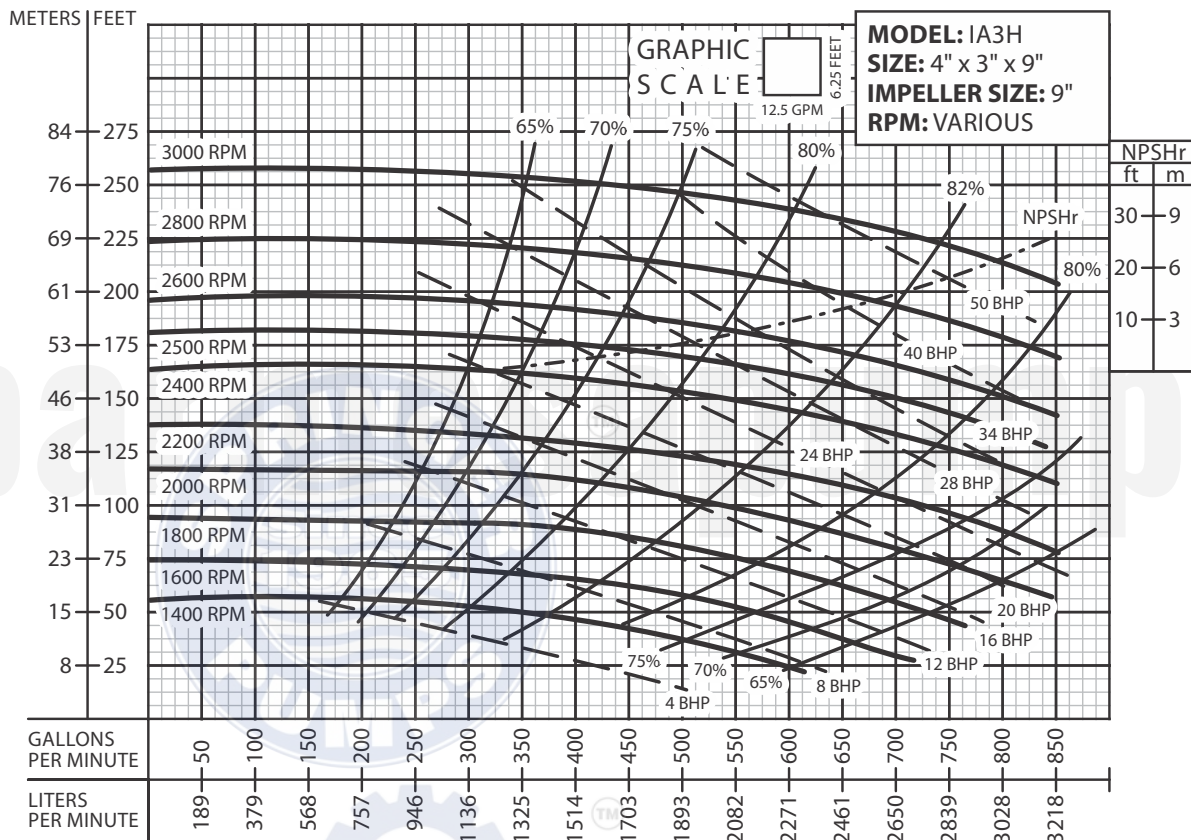
[barnesapumps.com/US](http://barnesapumps.com/US)

North America: 866 777 6060  
Int'l: +1 267 404 2910

Springer Pumps  
Springer Parts

[www.springerpumps.com](http://www.springerpumps.com)  
[www.springerparts.com](http://www.springerparts.com)

MODEL: **IA3H**  
RPM: VARIOUS



**IMPORTANT!**

1. Testing is performed with water specific gravity of 1.0 @ 68 °F (20 °C); other fluids may vary performance.

North America: 866 777 6060  
Int'l: +1 267 404 2910

Springer Pumps  
Springer Parts

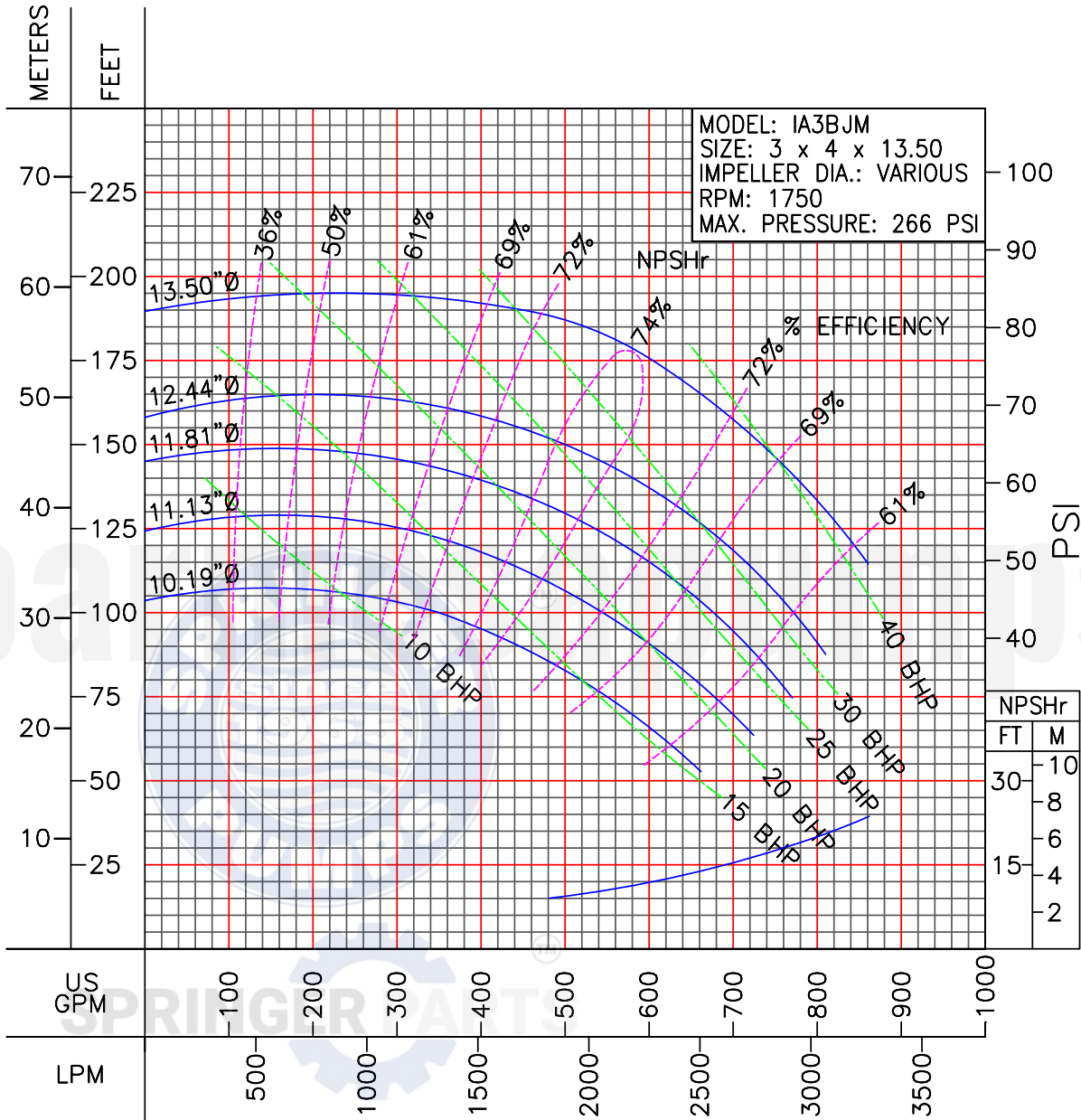
[barmesapumps.com/US](http://barmesapumps.com/US)  
[www.springerpumps.com](http://www.springerpumps.com)  
[www.springerparts.com](http://www.springerparts.com)



PERFORMANCE CURVES

MODEL: **IABJM**

RPM: 1750



LIQUID: WATER  
SPECIFIC GRAVITY: 1.00

TEMPERATURE: 70 °F (21 °C)

**IMPORTANT!**

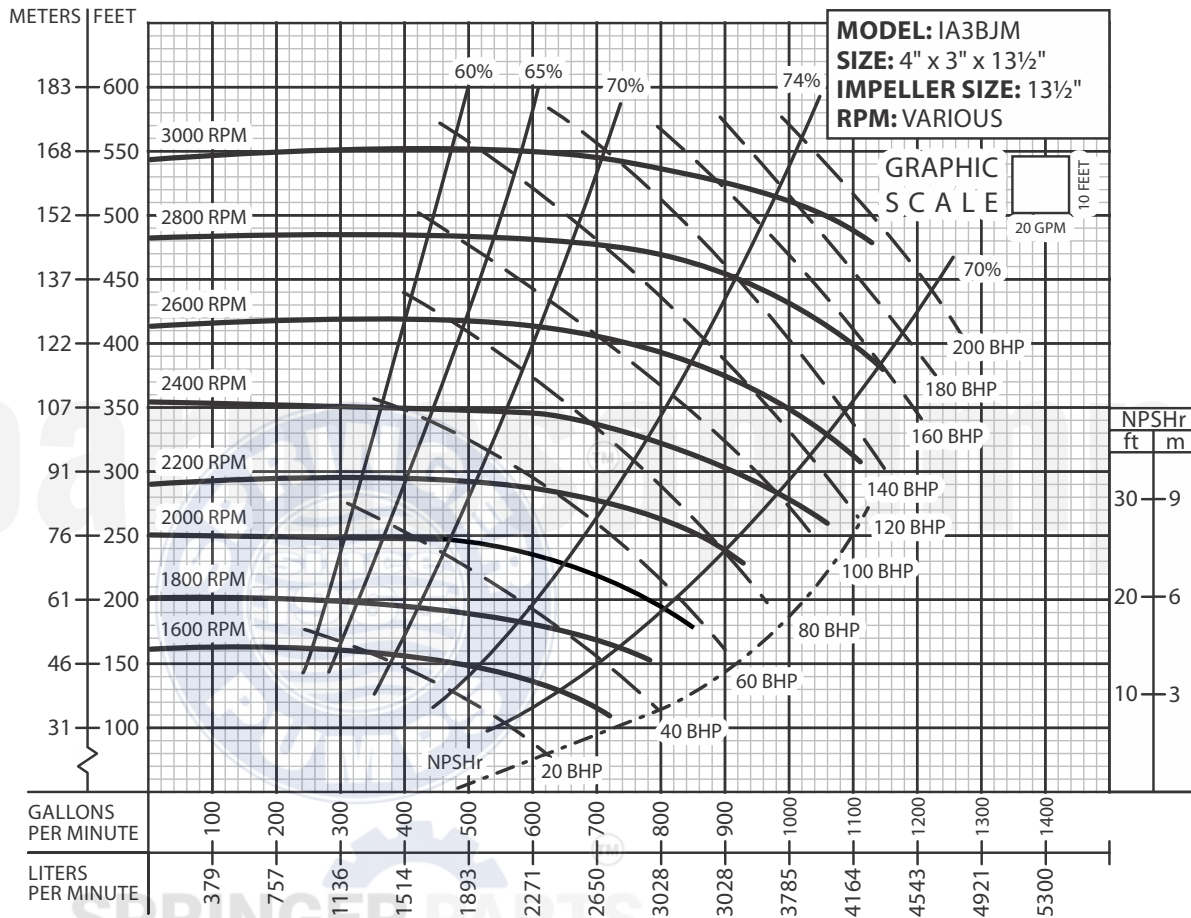
1. Testing is performed with water specific gravity of 1.0 @ 68 °F (20 °C); other fluids may vary performance.

North America: 866 777 6060  
Int'l: +1 267 404 2910

Springer Pumps  
Springer Parts

[barnesapumps.com/US](http://barnesapumps.com/US)  
[www.springerpumps.com](http://www.springerpumps.com)  
[www.springerparts.com](http://www.springerparts.com)

MODEL: **IA3BJM**  
RPM: VARIOUS



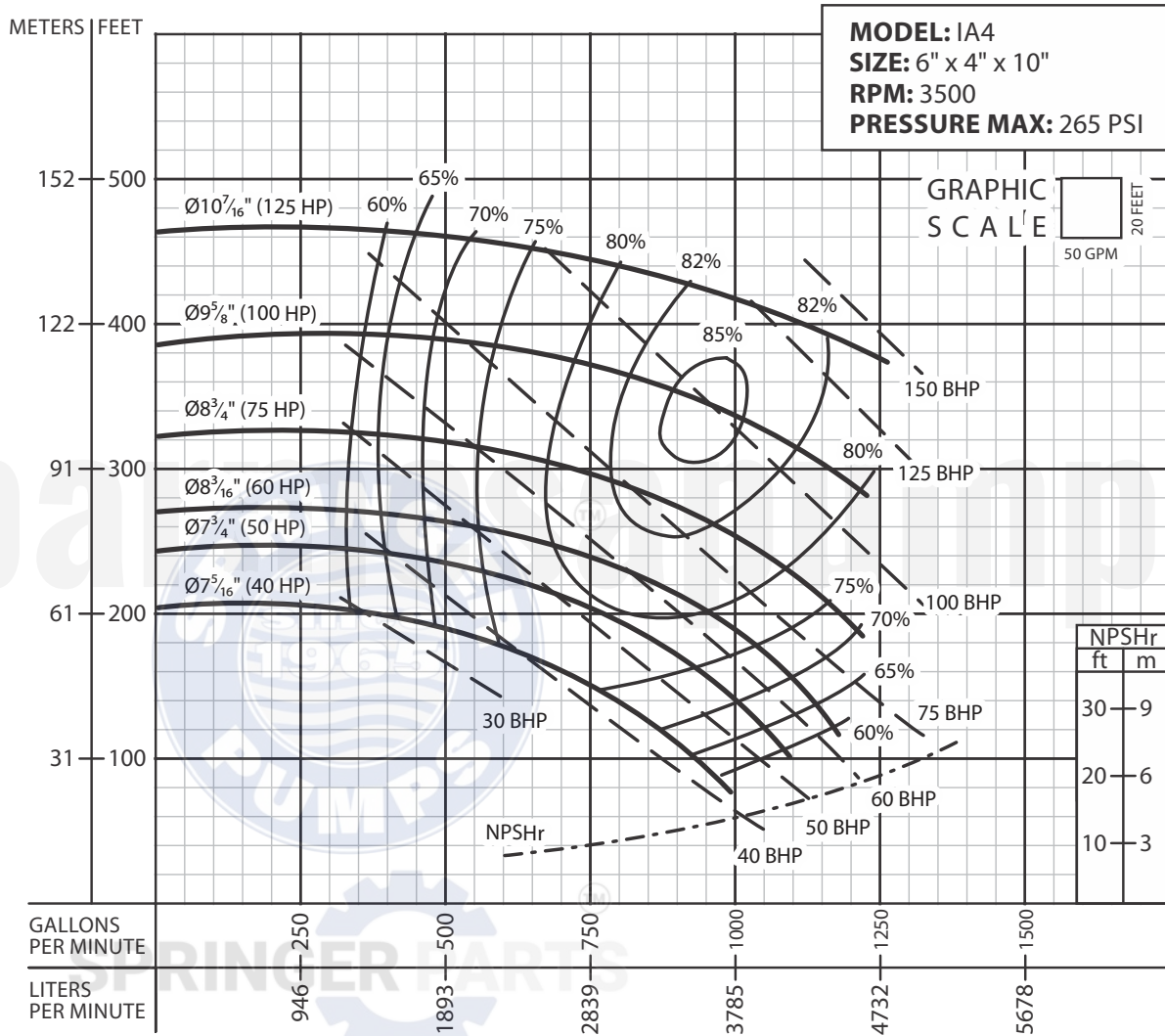
**IMPORTANT!**

1. Testing is performed with water specific gravity of 1.0 @ 68 °F (20 °C); other fluids may vary performance.

North America: 866 777 6060  
Int'l: +1 267 404 2910

Springer Pumps  
Springer Parts

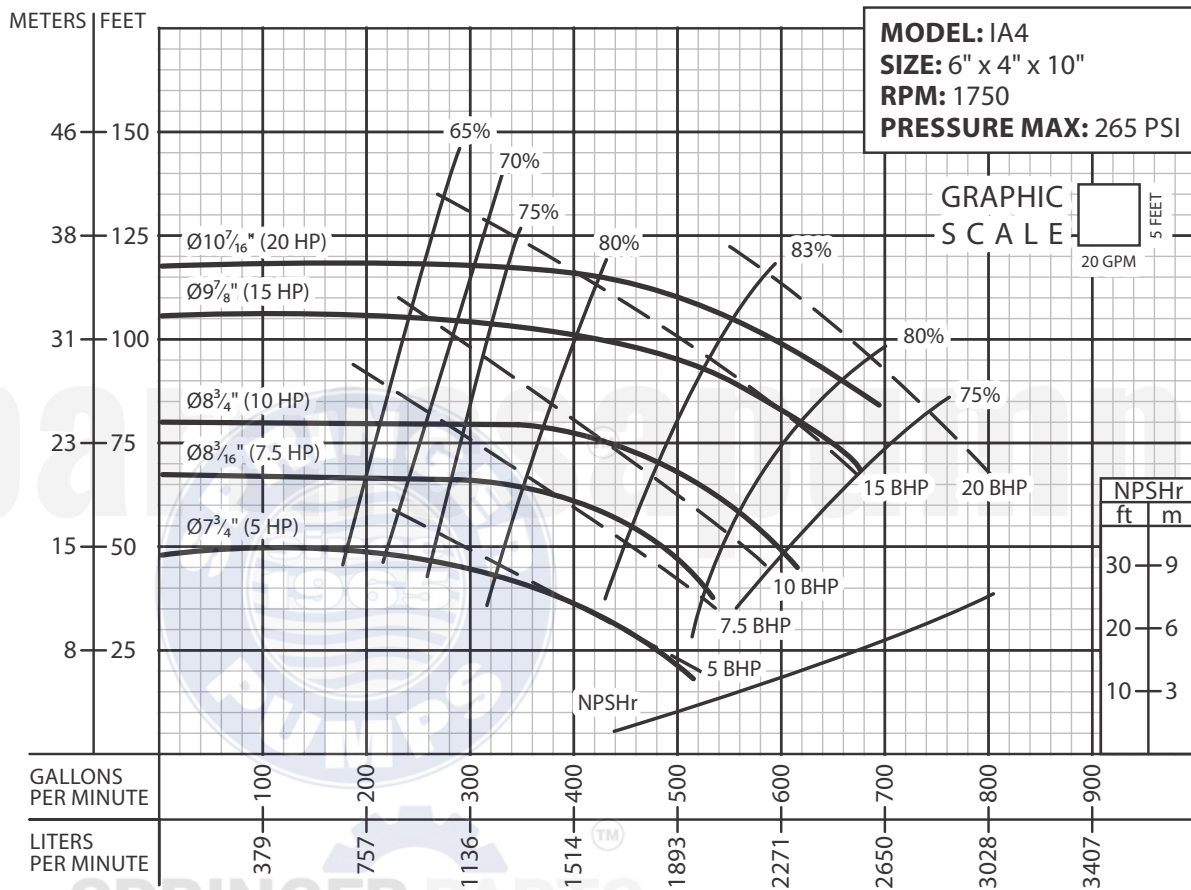
[barmesapumps.com/US](http://barmesapumps.com/US)  
[www.springerpumps.com](http://www.springerpumps.com)  
[www.springerparts.com](http://www.springerparts.com)



**IMPORTANT!**

1. Testing is performed with water specific gravity of 1.0 @ 68 °F (20 °C); other fluids may vary performance.

MODEL: **IA4**  
RPM: 1750



**IMPORTANT!**

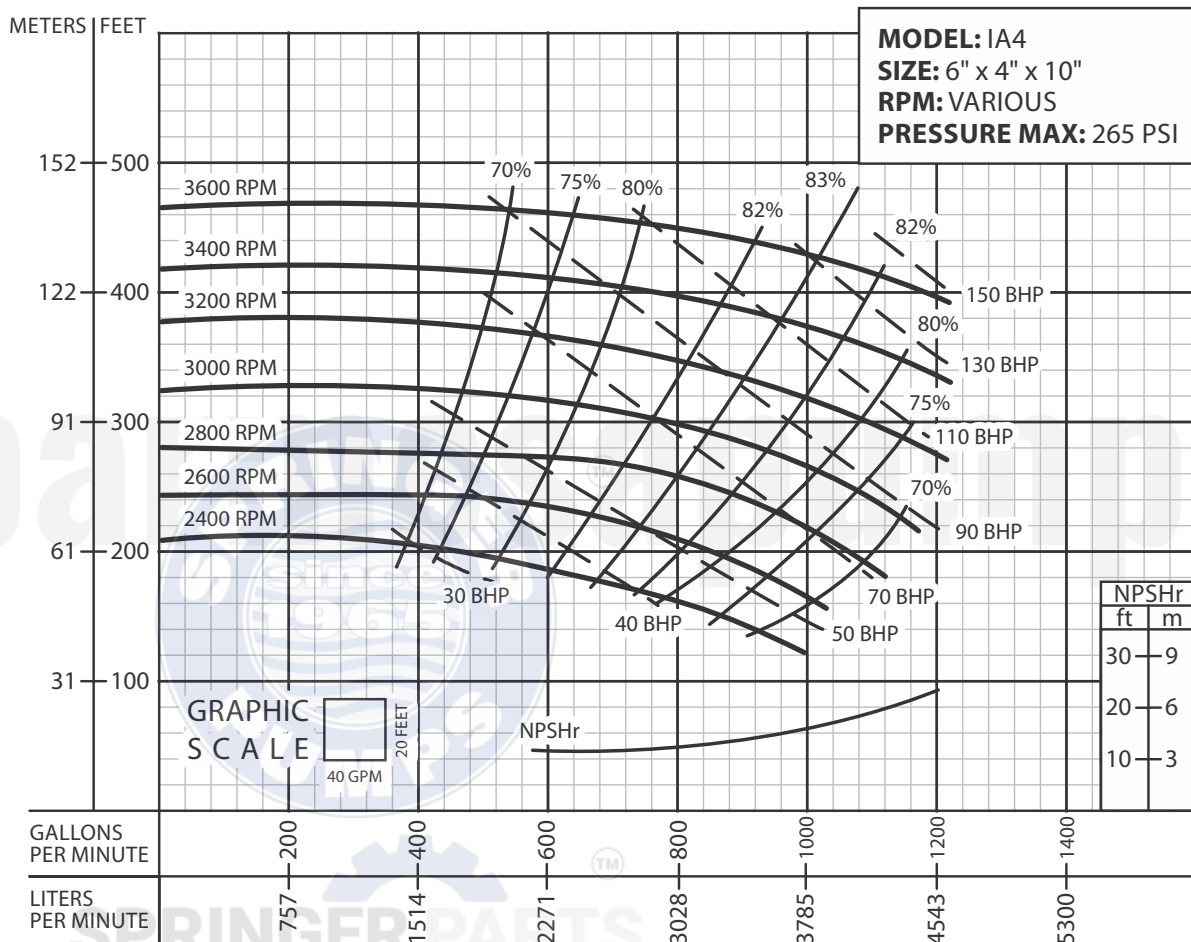
1. Testing is performed with water specific gravity of 1.0 @ 68 °F (20 °C); other fluids may vary performance.

North America: 866 777 6060  
Int'l: +1 267 404 2910

Springer Pumps  
Springer Parts

[barnesapumps.com/US](http://barnesapumps.com/US)  
[www.springerpumps.com](http://www.springerpumps.com)  
[www.springerparts.com](http://www.springerparts.com)

MODEL: **IA4**  
RPM: VARIOUS



**IMPORTANT!**

1. Testing is performed with water specific gravity of 1.0 @ 68 °F (20 °C); other fluids may vary performance.

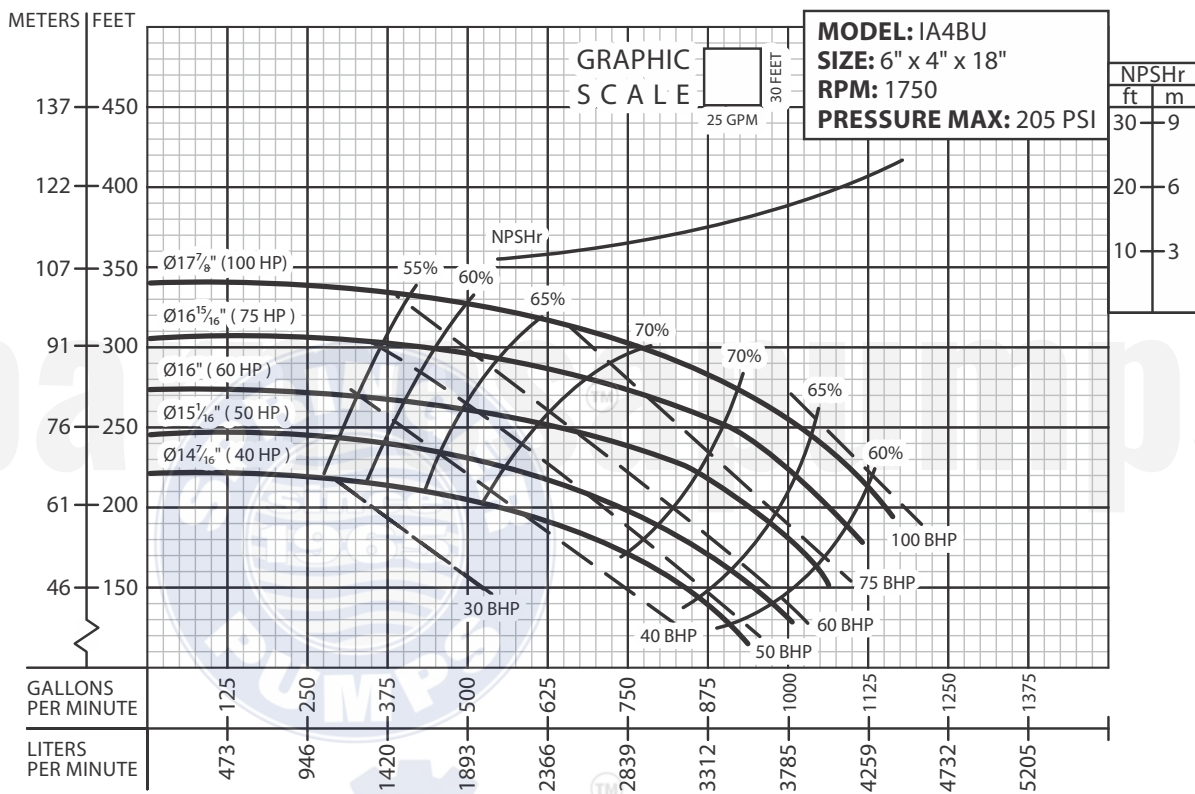
North America: 866 777 6060  
Int'l: +1 267 404 2910

Springer Pumps  
Springer Parts

[barnesapumps.com/US](http://barnesapumps.com/US)  
[www.springerpumps.com](http://www.springerpumps.com)  
[www.springerparts.com](http://www.springerparts.com)

MODEL: **IA4BU**

RPM: 1750



**IMPORTANT!**

1. Testing is performed with water specific gravity of 1.0 @ 68 °F (20 °C); other fluids may vary performance.

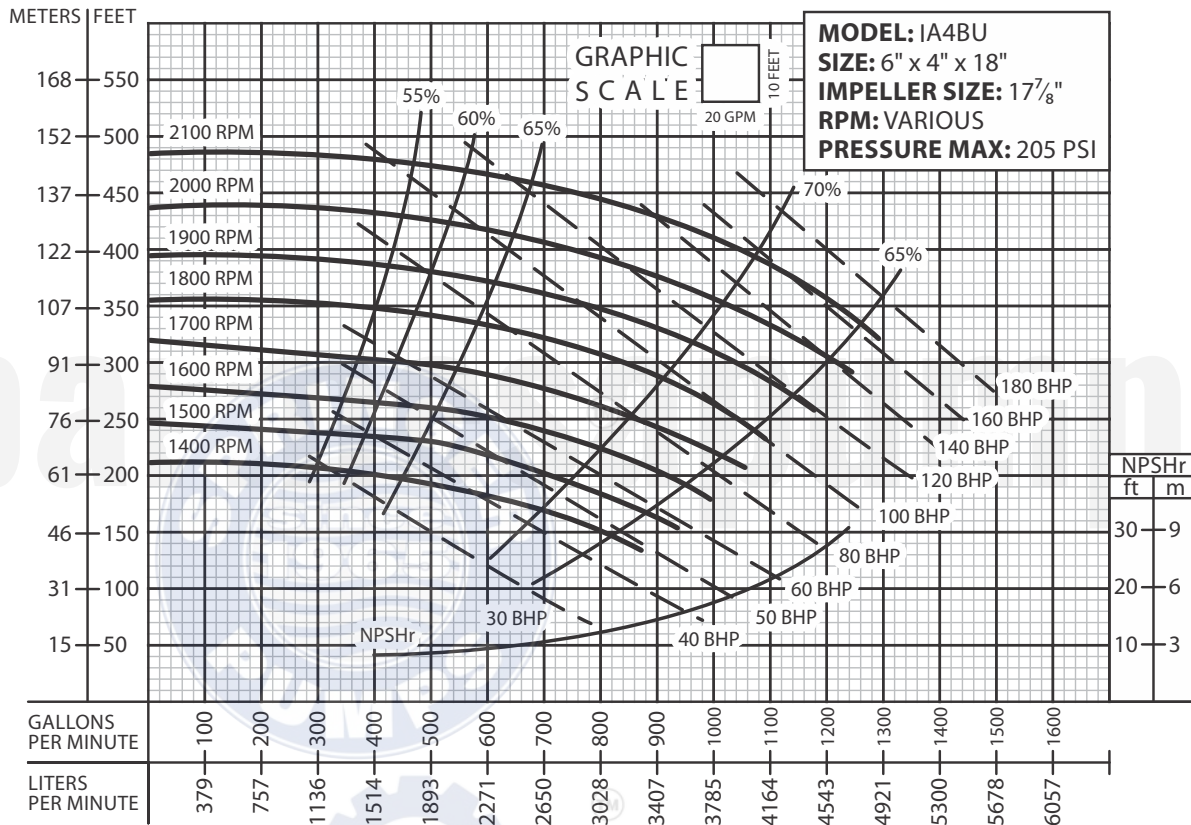
North America: 866 777 6060  
 Int'l: +1 267 404 2910

Springer Pumps  
 Springer Parts

[barmesapumps.com/US](http://barmesapumps.com/US)  
[www.springerpumps.com](http://www.springerpumps.com)  
[www.springerparts.com](http://www.springerparts.com)



MODEL: **IA4BU**  
RPM: VARIOUS



**IMPORTANT!**

1. Testing is performed with water specific gravity of 1.0 @ 68°F (20°C); other fluids may vary performance.

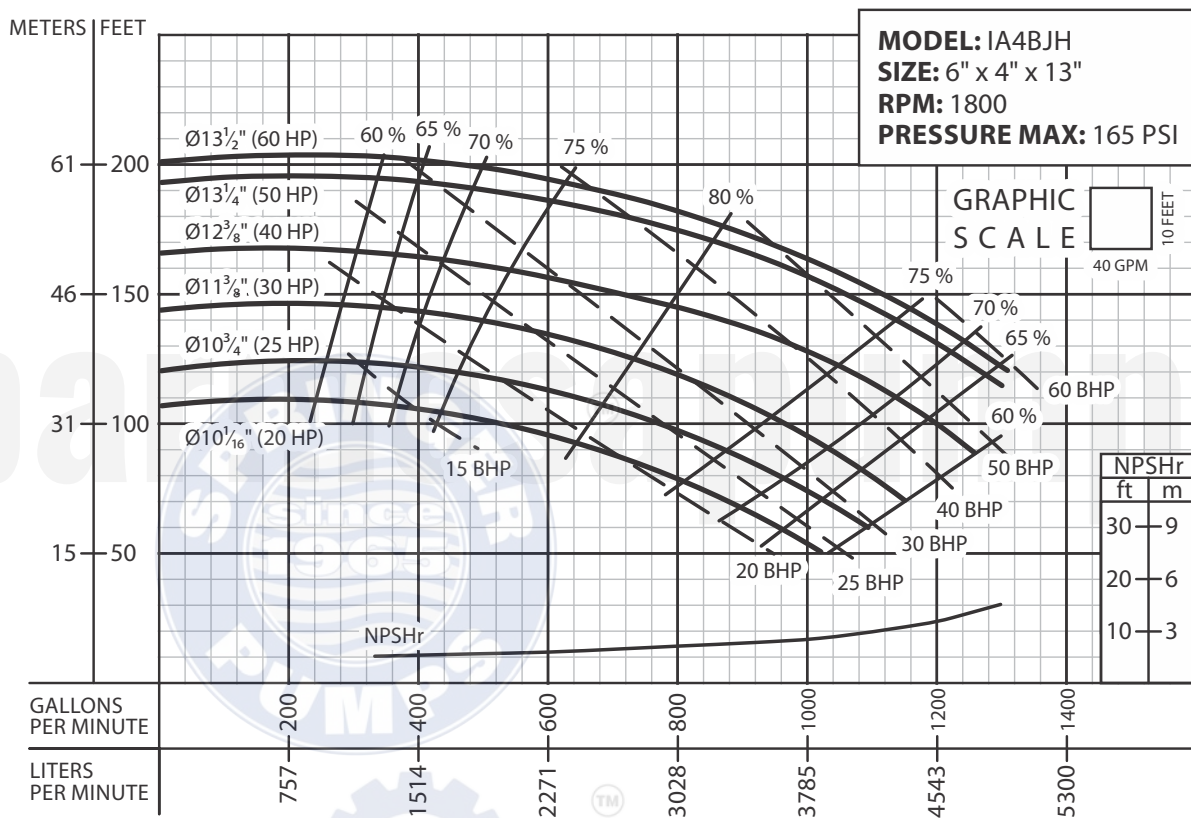
North America: 866 777 6060  
Int'l: +1 267 404 2910

Springer Pumps  
Springer Parts

[barnesapumps.com/US](http://barnesapumps.com/US)  
[www.springerpumps.com](http://www.springerpumps.com)  
[www.springerparts.com](http://www.springerparts.com)

MODEL: **IA4BJH**

RPM: 1800



**IMPORTANT!**

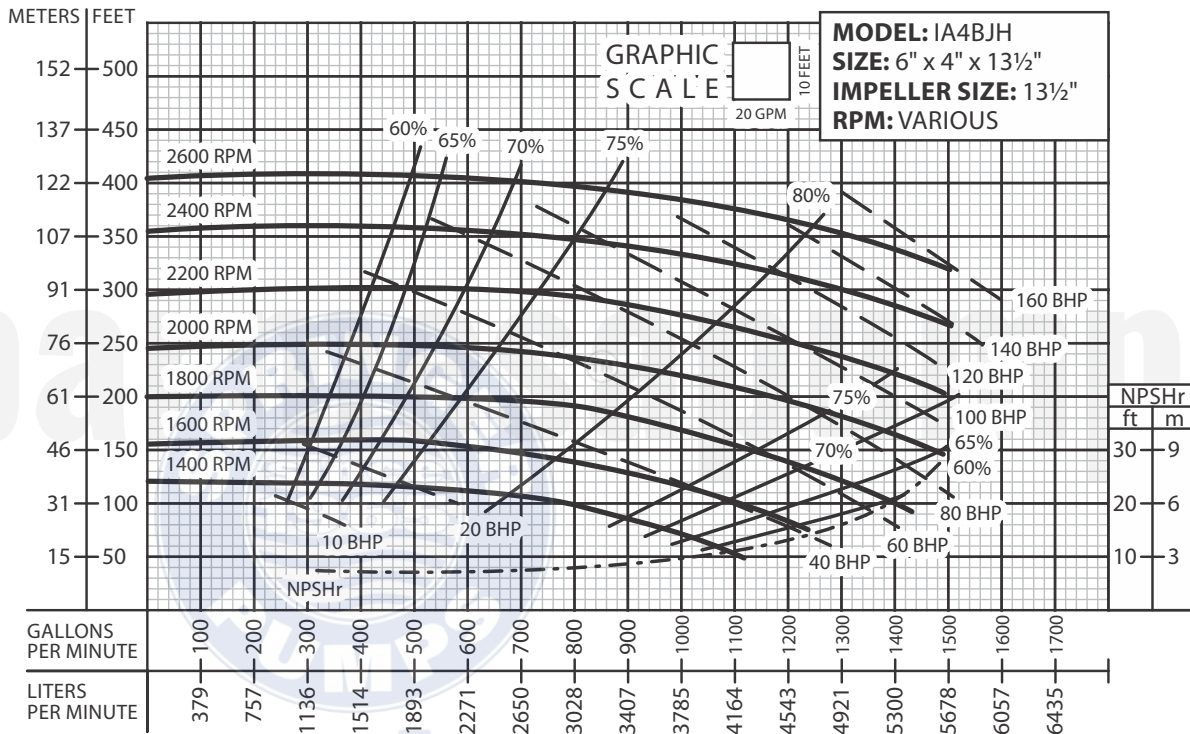
1. Testing is performed with water specific gravity of 1.0 @ 68°F (20°C); other fluids may vary performance.

North America: 866 777 6060  
 Int'l: +1 267 404 2910

Springer Pumps  
 Springer Parts

[barmesapumps.com/US](http://barmesapumps.com/US)  
[www.springerpumps.com](http://www.springerpumps.com)  
[www.springerparts.com](http://www.springerparts.com)

MODEL: **IA4BJH**  
RPM: VARIOUS



**IMPORTANT!**

1. Testing is performed with water specific gravity of 1.0 @ 68 °F (20 °C); other fluids may vary performance.

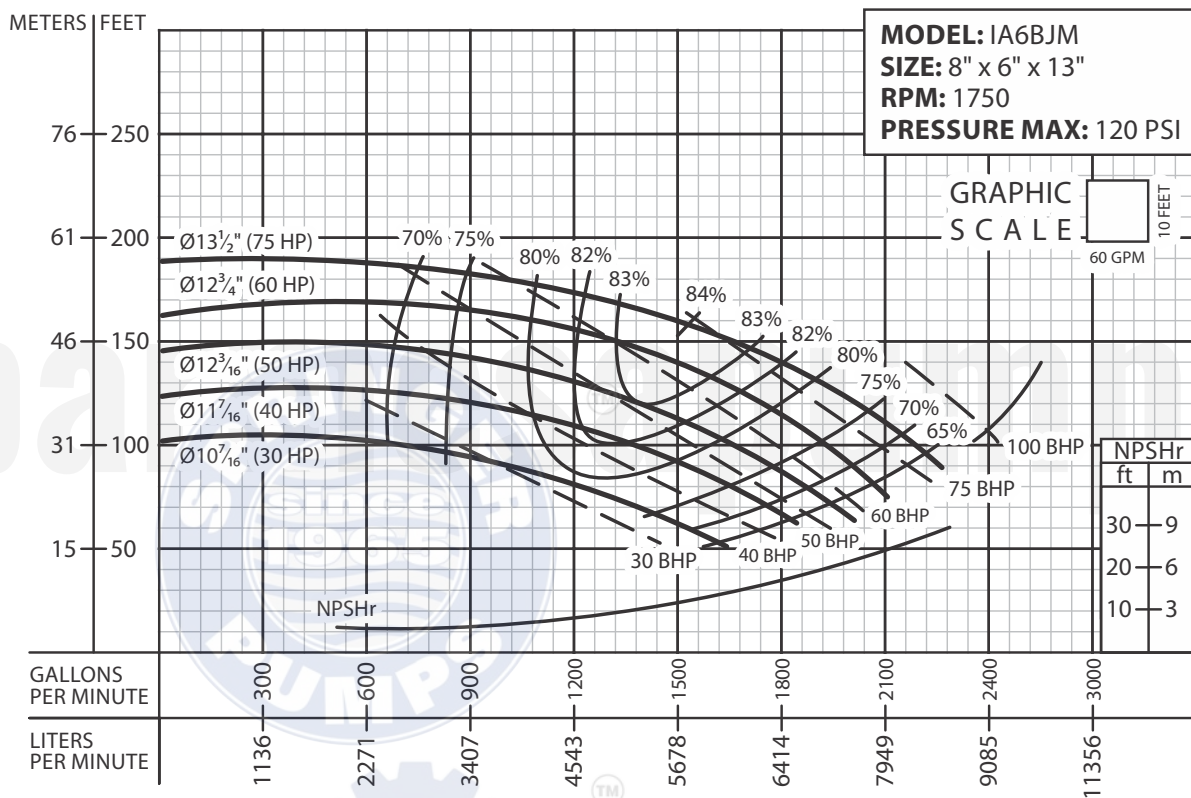
North America: 866 777 6060  
Int'l: +1 267 404 2910

Springer Pumps  
Springer Parts

[barmesapumps.com/US](http://barmesapumps.com/US)  
[www.springerpumps.com](http://www.springerpumps.com)  
[www.springerparts.com](http://www.springerparts.com)

MODEL: **IA6BJM**

RPM: 1750



**IMPORTANT!**

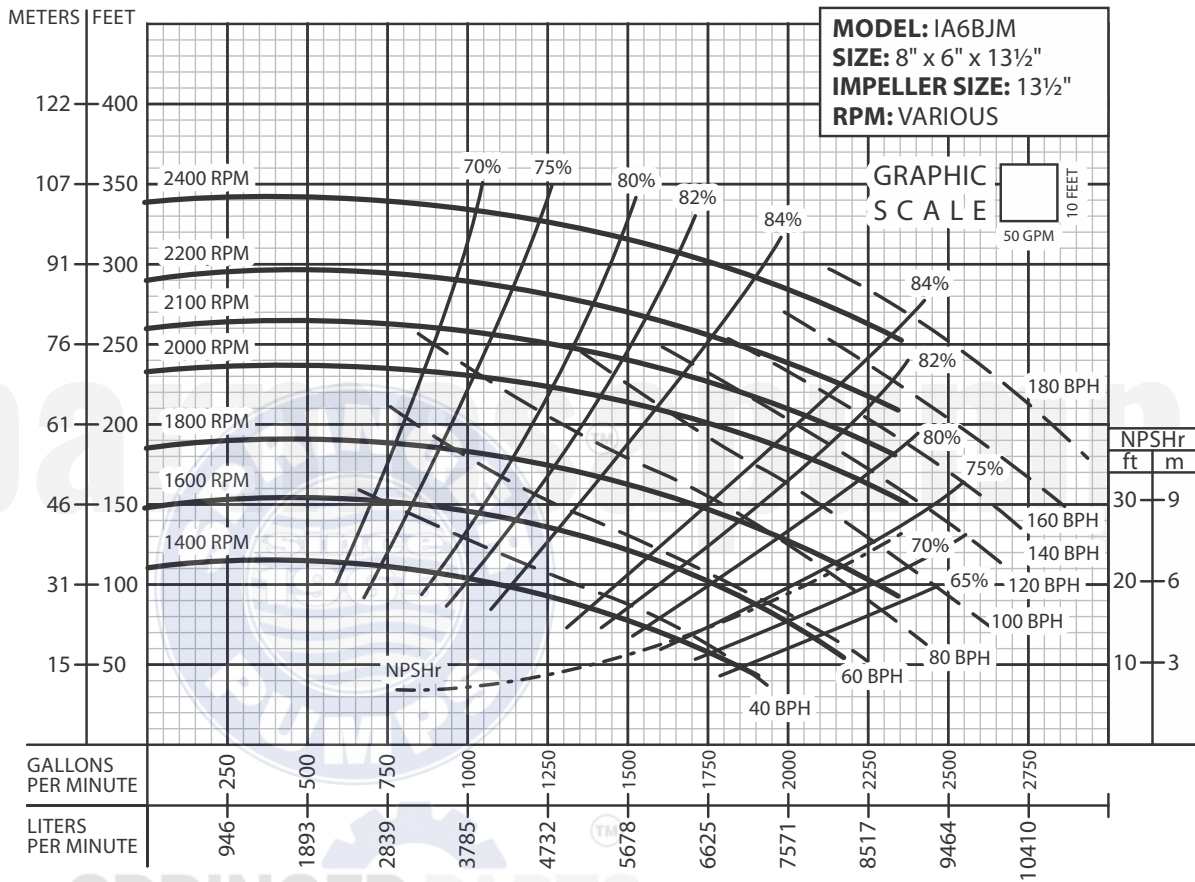
1. Testing is performed with water specific gravity of 1.0 @ 68 °F (20 °C); other fluids may vary performance.

North America: 866 777 6060  
 Int'l: +1 267 404 2910

Springer Pumps  
 Springer Parts

[barnesapumps.com/US](http://barnesapumps.com/US)  
[www.springerpumps.com](http://www.springerpumps.com)  
[www.springerparts.com](http://www.springerparts.com)

MODEL: **IA6BJM**  
RPM: VARIOUS



**IMPORTANT!**

1. Testing is performed with water specific gravity of 1.0 @ 68 °F (20 °C); other fluids may vary performance.

North America: 866 777 6060  
Int'l: +1 267 404 2910

Springer Pumps  
Springer Parts

[barmesapumps.com/US](http://barmesapumps.com/US)  
[www.springerpumps.com](http://www.springerpumps.com)  
[www.springerparts.com](http://www.springerparts.com)